

Recombinant Human CCL19 Protein, GST-Tagged

Cat. No. CCL19-0618H **Lot. No.** (See product label)

SPECIFICATION

Product Overview	Human CCL19 full-length ORF (AAH27968, 1 a.a. - 98 a.a.) recombinant protein with GST-tag at N-terminal.
Species	Human
Source	Wheat Germ
Description	This antimicrobial gene is one of several CC cytokine genes clustered on the p-arm of chromosome 9. Cytokines are a family of secreted proteins involved in immunoregulatory and inflammatory processes. The CC cytokines are proteins characterized by two adjacent cysteines. The cytokine encoded by this gene may play a role in normal lymphocyte recirculation and homing. It also plays an important role in trafficking of T cells in thymus, and in T cell and B cell migration to secondary lymphoid organs. It specifically binds to chemokine receptor CCR7. [provided by RefSeq, Sep 2014]
Molecular Mass	36.52 kDa
AA Sequence	MALLLALLLVLTSPAPTLSGTND AEDCCLSVTQKPIPGYIVRNHFHYLLIKDGCRVP AVVFTTLRGRQLCAPPDQPWVERIIQRLQRTSAKMKRRSS
Applications	Enzyme-linked Immunoabsorbent Assay Western Blot (Recombinant protein) Antibody Production Protein Array

 Tel: 1-631-559-9269 1-516-512-3133

 Email: info@creative-biomart.com  Fax: 1-631-938-8127

 45-1 Ramsey Road, Shirley, NY 11967, USA

Storage Store at -80 centigrade. Aliquot to avoid repeated freezing and thawing.

Storage Buffer 50 mM Tris-HCl, 10 mM reduced Glutathione, pH=8.0 in the elution buffer.

GENE INFORMATION

Gene Name CCL19 chemokine (C-C motif) ligand 19 [Homo sapiens]

Official Symbol CCL19

Synonyms

CCL19; chemokine (C-C motif) ligand 19; SCYA19, small inducible cytokine subfamily A (Cys Cys), member 19; C-C motif chemokine 19; beta chemokine exodus 3; CC chemokine ligand 19; CK beta 11; CKb11; EBI1 ligand chemokine; ELC; exodus 3; macrophage inflammatory protein 3 beta; MIP 3b; exodus-3; CK beta-11; MIP-3-beta; EBI1-ligand chemokine; beta chemokine exodus-3; beta-chemokine exodus-3; small-inducible cytokine A19; macrophage inflammatory protein 3-beta; epstein-Barr virus-induced molecule 1 ligand chemokine; small inducible cytokine subfamily A (Cys-Cys), member 19; MIP3B; MIP-3b; SCYA19; MGC34433;

Gene ID 6363

mRNA Refseq NM_006274

Protein Refseq NP_006265

MIM 602227

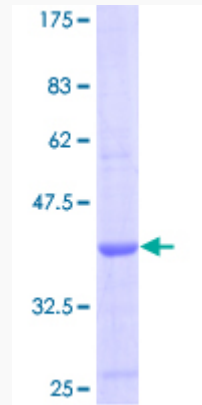
UniProt ID Q99731

 Tel: 1-631-559-9269 1-516-512-3133

 Email: info@creative-biomart.com  Fax: 1-631-938-8127

 45-1 Ramsey Road, Shirley, NY 11967, USA

**Quality Control
Testing**



12.5% SDS-PAGE Stained with Coomassie Blue.

 Tel: 1-631-559-9269 1-516-512-3133

 Email: info@creative-biomart.com  Fax: 1-631-938-8127

 45-1 Ramsey Road, Shirley, NY 11967, USA