

## Active Recombinant Human CCL19 protein, His-tagged

**Cat. No.** CCL19-721H    **Lot. No.** (See product label)

### SPECIFICATION

**Product Overview**      Active Recombinant Human CCL19 protein(Q99731)(22~98 aa), fused with N-terminal His tag, was expressed in E.coli.

**Species**                      Human

**Source**                        E.coli

**ProteinLength**              22-98 aa

**Form**                            Lyophilized from sterile 20mM Tris, 150mM NaCl, pH8.0, containing 1mM EDTA, 1mM DTT, 0.01% SKL, 5% Trehalose and Proclin300.

**Bio-activity**                      Macrophage Inflammatory Protein 3 Beta (MIP3b) is a small cytokine belonging to the CC chemokine family that is also known as EBI1 ligand chemokine (ELC) and Chemokine C-C motif ligand 19 (CCL19). This chemokine elicits its effects on its target cells by binding to the chemokine receptor chemokine receptor CCR7. It attracts certain cells of the immune system, including dendritic cells and antigen-engaged B cells, CCR7 central-memory T-Cells. Thus, chemotaxis assay used 24-well microchemotaxis system was undertaken to detect the chemotactic effect of recombinant human MIP3b on the Jurkat cell line. Briefly, Jurkat cells were seeded into the upper chambers (150µL cell suspension, 10<sup>6</sup> cells/mL in RPMI 1640 with FBS free) and MIP3b (0.01ng/mL, 0.1ng/mL, 1ng/mL, 10ng/mL, 100ng/mL and 1000ng/mL diluted separately in serum free RPMI 1640) was added in lower chamber with a polycarbonate filter (8µm pore size) used to separate the two compartments.

 Tel: 1-631-559-9269    1-516-512-3133

 Email: [info@creative-biomart.com](mailto:info@creative-biomart.com)     Fax: 1-631-938-8127

 45-1 Ramsey Road, Shirley, NY 11967, USA

After incubation at 37°C with 5% CO<sub>2</sub> for 3h, the filter was removed, then cells in low chamber were observed by inverted microscope at low magnification (×100) and the number of migrated cells were counted at high magnification (×400) randomly (five fields for each filter). Result shows MIP3b is able to induce migration of Jurkat cells. The migrated Jurkat cells in low chamber at low magnification (×100) were shown. Five fields of each chamber were randomly chosen, and the migrated cells were counted at high magnification (×400). Statistical results were shown. The optimum chemotaxis of recombinant human MIP3b occurs at 0.1-1ng/mL.

<b>Molecular Mass</b>	10.1kDa
<b>Endotoxin</b>	<1.0EU per 1µg (determined by the LAL method).
<b>Purity</b>	> 97% as determined by SDS-PAGE.
<b>Storage</b>	Avoid repeated freeze/thaw cycles. Store at -20°C for 12 months. Aliquot and store at -80°C for 12 months.
<b>Reconstitution</b>	Reconstitute in 20mM Tris, 150mM NaCl (PH8.0) to a concentration of 0.1-1.0 mg/mL. Do not vortex.

## GENE INFORMATION

<b>Gene Name</b>	CCL19 chemokine (C-C motif) ligand 19 [ Homo sapiens ]
<b>Official Symbol</b>	CCL19
<b>Synonyms</b>	CCL19; chemokine (C-C motif) ligand 19; SCYA19, small inducible cytokine subfamily A (Cys Cys), member 19; C-C motif chemokine 19; beta chemokine exodus 3; CC chemokine ligand 19; CK beta 11; CKb11; EBI1 ligand chemokine; ELC; exodus 3; macrophage inflammatory protein 3 beta; MIP 3b; exodus-3; CK beta-11; MIP-3-beta;

 Tel: 1-631-559-9269 1-516-512-3133

 Email: [info@creative-biomart.com](mailto:info@creative-biomart.com)  Fax: 1-631-938-8127

 45-1 Ramsey Road, Shirley, NY 11967, USA

EBI1-ligand chemokine; beta chemokine exodus-3; beta-chemokine exodus-3; small-inducible cytokine A19; macrophage inflammatory protein 3-beta; epstein-Barr virus-induced molecule 1 ligand chemokine; small inducible cytokine subfamily A (Cys-Cys), member 19; MIP3B; MIP-3b; SCYA19; MGC34433;

**Gene ID** [6363](#)

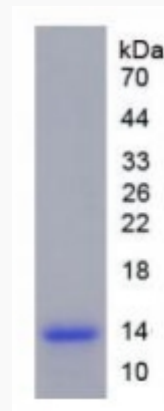
**mRNA Refseq** [NM\\_006274](#)

**Protein Refseq** [NP\\_006265](#)

**MIM** [602227](#)

**UniProt ID** [Q99731](#)

**SDS-PAGE**

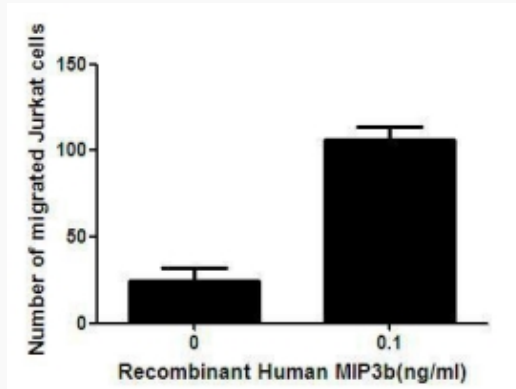


 Tel: 1-631-559-9269 1-516-512-3133

 Email: [info@creative-biomart.com](mailto:info@creative-biomart.com)  Fax: 1-631-938-8127

 45-1 Ramsey Road, Shirley, NY 11967, USA

Activity



 Tel: 1-631-559-9269 1-516-512-3133

 Email: [info@creative-biomart.com](mailto:info@creative-biomart.com)  Fax: 1-631-938-8127

 45-1 Ramsey Road, Shirley, NY 11967, USA