

Active Recombinant Human CCL2 Protein, His-tagged

Cat. No. CCL2-11H Lot. No. (See product label)

SPECIFICATION

Product Overview	Recombinant human CCL2/JE/MCP-1 (24-99aa, 82aa), fused to His-tag at C-terminus, was expressed in HEK293 and purified by using conventional chromatography techniques.
Species	Human
Source	HEK293
ProteinLength	24-99
Form	Liquid
Bio-activity	Measured its ability to chemoattract using THP-1 human acute monocytic leukemia cells. The ED50 range ≤ 30 ng/mL.
Molecular Mass	9.5 kDa
AA Sequence	QPDAINAPVTCCYNFTNRKISVQRLASYRRITSSKCPKEAVIFKTIVAKEICADPKQKW VQDSMDHLDKQTQTPKT
Endotoxin	< 1 EU/ μ g of protein (determined by LAL method)
Purity	> 90% by SDS-PAGE
Applications	SDS-PAGE, Bioactivity

 Tel: 1-631-559-9269 1-516-512-3133

 Email: info@creative-biomart.com  Fax: 1-631-938-8127

 45-1 Ramsey Road, Shirley, NY 11967, USA

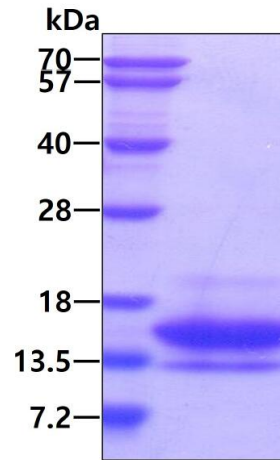
Storage	Can be stored at 2 to 8 centigrade for 1 week. For long term storage, aliquot and store at -20 to -80 centigrade. Avoid repeated freezing and thawing cycles.
Concentration	0.25 mg/mL (determined by Absorbance at 280nm)
Storage Buffer	Phosphate-Buffered Saline (pH 7.4) containing 10% glycerol
GENE INFORMATION	
Gene Name	CCL2 C-C motif chemokine ligand 2 [Homo sapiens (human)]
Official Symbol	CCL2
Synonyms	CCL2; C-C motif chemokine ligand 2; HC11; MCAF; MCP1; MCP-1; SCYA2; GDCF-2; SMC-CF; HSMCR30; C-C motif chemokine 2; chemokine (C-C motif) ligand 2; monocyte chemoattractant protein-1; monocyte chemotactic and activating factor; monocyte chemotactic protein 1; monocyte secretory protein JE; small inducible cytokine A2 (monocyte chemotactic protein 1, homologous to mouse Sig-je); small inducible cytokine subfamily A (Cys-Cys), member 2; small-inducible cytokine A2
Gene ID	6347
mRNA Refseq	NM_002982
Protein Refseq	NP_002973
MIM	158105
UniProt ID	P13500

 Tel: 1-631-559-9269 1-516-512-3133

 Email: info@creative-biomart.com  Fax: 1-631-938-8127

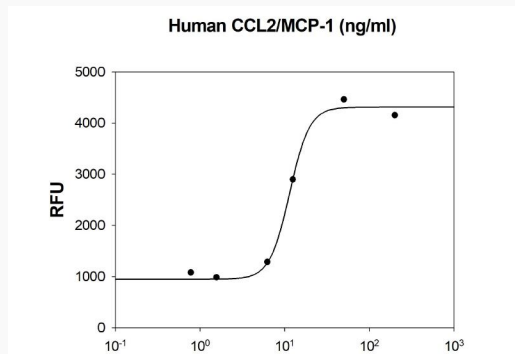
 45-1 Ramsey Road, Shirley, NY 11967, USA

SDS-PAGE



3 µg by SDS-PAGE under reducing condition and visualized by coomassie blue stain.

Biological Activity



Human CCL2/MCP-1 chemoattracts the the THP-1 human acute monocytic leukemia cells. The ED50 range \leq 30 ng/mL.

 Tel: 1-631-559-9269 1-516-512-3133

 Email: info@creative-biomart.com  Fax: 1-631-938-8127

 45-1 Ramsey Road, Shirley, NY 11967, USA