

Recombinant Human CCL2 protein, His-tagged

Cat. No. CCL2-189H Lot. No. (See product label)

SPECIFICATION

Product Overview	Recombinant Human CCL2 protein(NP_002973.1) (Gln24-Thr99) was expressed in Yeast with a polyhistidine tag at the C-terminus.
Species	Human
Source	Yeast
ProteinLength	24-99 aa
Form	Lyophilized from sterile PBS, pH 7.4.
Molecular Mass	The recombinant human CCL2 consists 86 amino acids and predicts a molecular mass of 10.1 kDa.
Purity	> 95 % as determined by SDS-PAGE
Storage	Store it under sterile conditions at -20°C to -80°C upon receiving. Recommend to aliquot the protein into smaller quantities for optimal storage. Avoid repeated freeze-thaw cycles.
Reconstitution	It is recommended that sterile water be added to the vial to prepare a stock solution of 0.2 ug/ul. Centrifuge the vial at 4°C before opening to recover the entire contents.

GENE INFORMATION

 Tel: 1-631-559-9269 1-516-512-3133

 Email: info@creative-biomart.com  Fax: 1-631-938-8127

 45-1 Ramsey Road, Shirley, NY 11967, USA



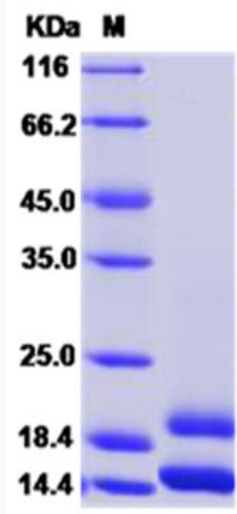
Gene Name	CCL2 chemokine (C-C motif) ligand 2 [Homo sapiens]
Official Symbol	CCL2
Synonyms	CCL2; chemokine (C-C motif) ligand 2; SCYA2, small inducible cytokine A2 (monocyte chemotactic protein 1, homologous to mouse Sig je); C-C motif chemokine 2; GDCF 2; HC11; MCAF; MCP 1; MCP1; MGC9434; monocyte chemoattractant protein 1; monocyte chemotactic and activating factor; monocyte chemotactic protein 1; homologous to mouse Sig je; monocyte secretory protein JE; small inducible cytokine subfamily A (Cys Cys); member 2; SMC CF; small-inducible cytokine A2; monocyte chemoattractant protein-1; small inducible cytokine subfamily A (Cys-Cys), member 2; small inducible cytokine A2 (monocyte chemotactic protein 1, homologous to mouse Sig-je); MCP-1; SCYA2; GDCF-2; SMC-CF; HSMCR30;
Gene ID	6347
mRNA Refseq	NM_002982
Protein Refseq	NP_002973
UniProt ID	P13500

Tel: 1-631-559-9269 1-516-512-3133

Email: info@creative-biomart.com Fax: 1-631-938-8127

45-1 Ramsey Road, Shirley, NY 11967, USA

SDS-PAGE



 Tel: 1-631-559-9269 1-516-512-3133

 Email: info@creative-biomart.com  Fax: 1-631-938-8127

 45-1 Ramsey Road, Shirley, NY 11967, USA