

## Recombinant Pig CCL2 Protein (Gln24-Pro99), N-His tagged, Animal-free, Carrier-free

Cat. No. CCL2-209P Lot. No. (See product label)

### SPECIFICATION

<b>Product Overview</b>	Recombinant Pig CCL2 Protein (Gln24-Pro99) with N-His tag was expressed in E. coli and Animal-free as well as Carrier-free.
<b>Species</b>	Pig
<b>Source</b>	E.coli
<b>ProteinLength</b>	Gln24-Pro99
<b>Description</b>	CCL2 (Chemokine ligand 2) is also named for the MCP1 (monocyte chemoattractant protein 1) which is a cytokine of CC chemokine family. CCL2 plays an important role in the recruitment of T cell and monocyte during inflammation, which is induced by the infection. CCL2 is secreted from the osteoblasts which is under the mediation of the NF-κB pathway. In cancer therapy, CCL2 plays an important role in increasing the anti-tumor capability of monocytes and neutrophils.
<b>Form</b>	Lyophilized
<b>Molecular Mass</b>	The protein has a calculated MW of 9.42 kDa. The protein migrates as 11-17 kDa under reducing condition (SDS-PAGE analysis).
<b>Endotoxin</b>	< 0.1 EU/μg of the protein by the LAL method.
<b>Purity</b>	>98% as determined by SDS-PAGE analysis.

 Tel: 1-631-559-9269 1-516-512-3133

 Email: [info@creative-biomart.com](mailto:info@creative-biomart.com)  Fax: 1-631-938-8127

 45-1 Ramsey Road, Shirley, NY 11967, USA

<b>Storage</b>	<p>This product is stable after storage at:</p> <p>-20 centigrade for 12 months in lyophilized state from date of receipt.</p> <p>-20 or -80 centigrade for 1 month under sterile conditions after reconstitution.</p> <p>Avoid repeated freeze/thaw cycles.</p>
<b>Storage Buffer</b>	Lyophilized from a 0.2 µm filtered solution of PBS, pH 7.4.
<b>Reconstitution</b>	It is recommended to reconstitute the lyophilized protein in sterile H <sub>2</sub> O to a concentration not less than 200 µg/mL and incubate the stock solution for at least 20 min to ensure sufficient re-dissolved.
<b>Shipping</b>	The product is shipped with polar packs. Upon receipt, store it immediately at -20 centigrade or lower for long term storage.

## GENE INFORMATION

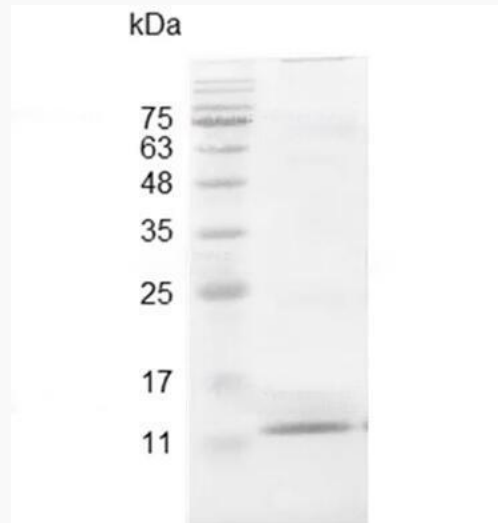
<b>Gene Name</b>	CCL2 chemokine (C-C motif) ligand 2 [ <i>Sus scrofa</i> ]
<b>Official Symbol</b>	CCL2
<b>Synonyms</b>	CCL2; chemokine (C-C motif) ligand 2; C-C motif chemokine 2; small-inducible cytokine A2; monocyte chemotactic protein 1; monocyte chemoattractant protein 1; MCP-1;
<b>Gene ID</b>	397422
<b>mRNA Refseq</b>	NM_214214
<b>Protein Refseq</b>	NP_999379
<b>UniProt ID</b>	P42831

 Tel: 1-631-559-9269 1-516-512-3133

 Email: [info@creative-biomart.com](mailto:info@creative-biomart.com)  Fax: 1-631-938-8127

 45-1 Ramsey Road, Shirley, NY 11967, USA

**SDS-PAGE analysis  
of recombinant  
swine CCL2.**



 Tel: 1-631-559-9269 1-516-512-3133

 Email: [info@creative-biomart.com](mailto:info@creative-biomart.com)  Fax: 1-631-938-8127

 45-1 Ramsey Road, Shirley, NY 11967, USA