

## Recombinant Rhesus monkey CCL2 Protein, His-tagged

**Cat. No.** CCL2-2145R    **Lot. No.** (See product label)

### SPECIFICATION

<b>Product Overview</b>	Recombinant Rhesus monkey CCL2 Protein (Gln24-Pro99) with a N-His tag was expressed in 293F.
<b>Species</b>	Rhesus macaque
<b>Source</b>	HEK293
<b>ProteinLength</b>	Gln24-Pro99
<b>Description</b>	Acts as a ligand for C-C chemokine receptor CCR2.
<b>Form</b>	Freeze-dried powder
<b>Molecular Mass</b>	Predicted Molecular Mass: 10.3 kDa Accurate Molecular Mass: \
<b>Endotoxin</b>	<1.0 EU per 1g (determined by the LAL method).
<b>Purity</b>	> 95%
<b>Applications</b>	Positive Control; Immunogen; SDS-PAGE; WB.
<b>Stability</b>	The thermal stability is described by the loss rate. The loss rate was determined by accelerated thermal degradation test, that is, incubate the protein at 37 centigrade for 48h, and no obvious degradation and precipitation were observed. The loss rate is

 Tel: 1-631-559-9269    1-516-512-3133

 Email: [info@creative-biomart.com](mailto:info@creative-biomart.com)     Fax: 1-631-938-8127

 45-1 Ramsey Road, Shirley, NY 11967, USA

less than 5% within the expiration date under appropriate storage condition.

**Storage**

Avoid repeated freeze/thaw cycles. Store at 2-8 centigrade for one month. Aliquot and store at -80 centigrade for 12 months.

**Storage Buffer**

PBS, pH7.4, containing 0.01% SKL, 1mM DTT, 5% Trehalose and Proclin300.

**Reconstitution**

Reconstitute in 10mM PBS (pH7.4) to a concentration of 0.1-1.0 mg/mL. Do not vortex.

## GENE INFORMATION

**Gene Name**

CCL2 C-C motif chemokine ligand 2 [ *Macaca mulatta* (Rhesus monkey) ]

**Official Symbol**

CCL2

**Synonyms**

CCL2; C-C motif chemokine ligand 2; MCP-1; C-C motif chemokine 2  
chemokine CCL2/MCP-1  
monocyte chemoattractant protein-1  
monocyte chemotactic protein 1  
small-inducible cytokine A2

**Gene ID**

574138

**mRNA Refseq**

NM\_001032821

**Protein Refseq**

NP\_001027993

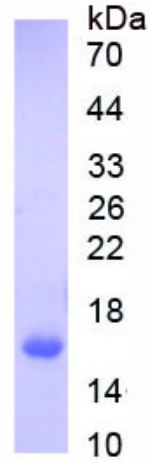
**UniProt ID**

P61275

 Tel: 1-631-559-9269 1-516-512-3133

 Email: [info@creative-biomart.com](mailto:info@creative-biomart.com)  Fax: 1-631-938-8127

 45-1 Ramsey Road, Shirley, NY 11967, USA



Tel: 1-631-559-9269 1-516-512-3133

Email: [info@creative-biomart.com](mailto:info@creative-biomart.com) Fax: 1-631-938-8127

45-1 Ramsey Road, Shirley, NY 11967, USA