

Active Recombinant Human CCL2 Protein (Gln24-Thr99), N-His tagged, Animal-free, Carrier-free

Cat. No. CCL2-267H Lot. No. (See product label)

SPECIFICATION

Product Overview	Recombinant Human CCL2 Protein (Gln24-Thr99) with N-His tag was expressed in E. coli and Animal-free as well as Carrier-free.
Species	Human
Source	E.coli
ProteinLength	Gln24-Thr99
Description	C-C Motif Chemokine Ligand 2 (CCL2) is an 8.44 kDa cytokine with 76 amino acid residues and is also known as monocyte chemoattractant protein 1 (MCP1). The CCL2 secreted from monocytes, macrophages, and dendritic cells. Upon binding with CCR4, it regulates many biological functions, such as recruitments of monocytes, memory T cells, and dendritic cells, response to TNF- α and Interferon- γ , angiogenesis, cellular homeostasis, and cytoskeleton organization.
Form	Lyophilized
Bio-activity	Measure by its ability to chemoattract BaF3 cells transfected with human CCR2A. The ED50 for this effect is < 20 ng/mL.
Molecular Mass	The protein has a calculated MW of 9.49 kDa. The protein migrates as 11 kDa under reducing condition (SDS-PAGE analysis).

 Tel: 1-631-559-9269 1-516-512-3133

 Email: info@creative-biomart.com  Fax: 1-631-938-8127

 45-1 Ramsey Road, Shirley, NY 11967, USA

Endotoxin	< 0.1 EU/μg of the protein by the LAL method.
Purity	>95% as determined by SDS-PAGE analysis.
Storage	This product is stable after storage at: -20 centigrade for 12 months in lyophilized state from date of receipt. -20 or -80 centigrade for 1 month under sterile conditions after reconstitution. Avoid repeated freeze/thaw cycles.
Storage Buffer	Lyophilized from a 0.2 μm filtered solution of PBS, pH 7.4.
Reconstitution	It is recommended to reconstitute the lyophilized protein in sterile H2O to a concentration not less than 200 μg/mL and incubate the stock solution for at least 20 min to ensure sufficient re-dissolved.
Shipping	The product is shipped with polar packs. Upon receipt, store it immediately at -20 centigrade or lower for long term storage.

GENE INFORMATION

Gene Name	CCL2 chemokine (C-C motif) ligand 2 [Homo sapiens (human)]
Official Symbol	CCL2
Synonyms	CCL2; chemokine (C-C motif) ligand 2; SCYA2, small inducible cytokine A2 (monocyte chemotactic protein 1, homologous to mouse Sig je); C-C motif chemokine 2; GDCF 2; HC11; MCAF; MCP 1; MCP1; MGC9434; monocyte chemoattractant protein 1; monocyte chemotactic and activating factor; monocyte chemotactic protein 1; homologous to mouse Sig je; monocyte secretory protein JE; small inducible cytokine subfamily A (Cys Cys); member 2; SMC CF; small-inducible cytokine A2; monocyte chemoattractant protein-1; small inducible cytokine subfamily A (Cys-Cys),

 Tel: 1-631-559-9269 1-516-512-3133

 Email: info@creative-biomart.com  Fax: 1-631-938-8127

 45-1 Ramsey Road, Shirley, NY 11967, USA

member 2; small inducible cytokine A2 (monocyte chemotactic protein 1, homologous to mouse Sig-je); MCP-1; SCYA2; GDCF-2; SMC-CF; HSMCR30;

Gene ID 6347

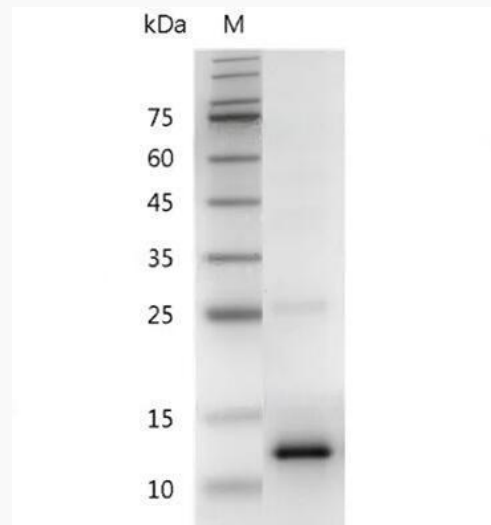
mRNA Refseq NM_002982

Protein Refseq NP_002973

MIM 158105

UniProt ID P13500

**SDS-PAGE analysis
of recombinant
human CCL2.**



 Tel: 1-631-559-9269 1-516-512-3133

 Email: info@creative-biomart.com  Fax: 1-631-938-8127

 45-1 Ramsey Road, Shirley, NY 11967, USA