

Recombinant Human CCL2 Protein, Myc/DDK-tagged, C13 and N15-labeled

Cat. No. CCL2-3792H **Lot. No.** (See product label)

SPECIFICATION

Product Overview

CCL2 MS Standard C13 and N15-labeled recombinant protein (NP_002973) with a C-terminal MYC/DDK tag, was expressed in HEK293 cells.

Species

Human

Source

HEK293

Description

This gene is one of several cytokine genes clustered on the q-arm of chromosome 17. Chemokines are a superfamily of secreted proteins involved in immunoregulatory and inflammatory processes. The superfamily is divided into four subfamilies based on the arrangement of N-terminal cysteine residues of the mature peptide. This chemokine is a member of the CC subfamily which is characterized by two adjacent cysteine residues. This cytokine displays chemotactic activity for monocytes and basophils but not for neutrophils or eosinophils. It has been implicated in the pathogenesis of diseases characterized by monocytic infiltrates, like psoriasis, rheumatoid arthritis and atherosclerosis. It binds to chemokine receptors CCR2 and CCR4.

Molecular Mass

11 kDa

AA Sequence

MKVSAALLCLLLIAATFIPQGLAQPDAINAPVTCCYNFTNRKISVQRLASYRRITSSKC
PKEAVIFKTIVAKEICADPKQKWVQDSMDHLDKQTQTPKTTTRTRPLEQKLISEEDLAA
NDILDYKDDDDKV

 Tel: 1-631-559-9269 1-516-512-3133

 Email: info@creative-biomart.com  Fax: 1-631-938-8127

 45-1 Ramsey Road, Shirley, NY 11967, USA

Purity	> 80% as determined by SDS-PAGE and Coomassie blue staining
Stability	Stable for 3 months from receipt of products under proper storage and handling conditions.
Storage	Store at -80 centigrade. Avoid repeated freeze-thaw cycles.
Concentration	50 µg/mL as determined by BCA
Storage Buffer	100 mM glycine, 25 mM Tris-HCl, pH 7.3.

GENE INFORMATION

Gene Name	CCL2 C-C motif chemokine ligand 2 [Homo sapiens (human)]
Official Symbol	CCL2
Synonyms	CCL2; chemokine (C-C motif) ligand 2; SCYA2, small inducible cytokine A2 (monocyte chemotactic protein 1, homologous to mouse Sig je); C-C motif chemokine 2; GDCF 2; HC11; MCAF; MCP 1; MCP1; MGC9434; monocyte chemoattractant protein 1; monocyte chemotactic and activating factor; monocyte chemotactic protein 1; homologous to mouse Sig je; monocyte secretory protein JE; small inducible cytokine subfamily A (Cys Cys); member 2; SMC CF; small-inducible cytokine A2; monocyte chemoattractant protein-1; small inducible cytokine subfamily A (Cys-Cys), member 2; small inducible cytokine A2 (monocyte chemotactic protein 1, homologous to mouse Sig-je); MCP-1; SCYA2; GDCF-2; SMC-CF; HSMCR30;
Gene ID	6347
mRNA Refseq	NM_002982

 Tel: 1-631-559-9269 1-516-512-3133

 Email: info@creative-biomart.com  Fax: 1-631-938-8127

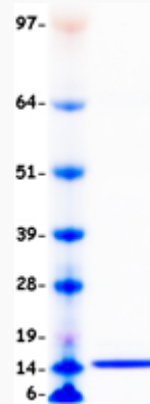
 45-1 Ramsey Road, Shirley, NY 11967, USA

Protein Refseq NP_002973

MIM 158105

UniProt ID P13500

SDS-PAGE



 Tel: 1-631-559-9269 1-516-512-3133

 Email: info@creative-biomart.com  Fax: 1-631-938-8127

 45-1 Ramsey Road, Shirley, NY 11967, USA