

Recombinant Human CCL2 protein, His-Avi-tagged

Cat. No. CCL2-500H **Lot. No.** (See product label)

SPECIFICATION

Product Overview	Recombinant Human MCP-1/CCL2 is expressed from mammalian with a His Tag and Avi Tag at the C-terminal. It contains Gln24-Thr99.
Species	Human
Source	HEK293
ProteinLength	Gln24-Thr99
Description	Monocyte chemotactic protein-1 (MCP-1) (also referred to as chemokine (C-C motif) ligand 2 (CCL2) is expressed by mainly inflammatory cells and endothelial cells. MCP-1 has been reported to play an important role in the pathogenesis of atherosclerosis and considerable evidence supports that the monocyte containing MCPs and macrophage influences the growth of other cell types within the atherosclerotic lesion. This review will focus on the general structure features of MCP-1 and its role in atherosclerosis.
Form	Supplied as 0.22um filtered solution in PBS (pH 7.4).
Molecular Mass	The protein has a predicted MW of 11.5 kDa. Due to glycosylation, the protein migrates to 15-20 KDa based on Bis-Tris PAGE result.
Endotoxin	Less than 1 EU per ug by the LAL method.
Purity	> 95% as determined by Bis-Tris PAGE; > 95% as determined by HPLC

 Tel: 1-631-559-9269 1-516-512-3133

 Email: info@creative-biomart.com  Fax: 1-631-938-8127

 45-1 Ramsey Road, Shirley, NY 11967, USA

Storage The product should be stored at -70°C. Please do not repeated freeze-thaw cycles.

GENE INFORMATION

Gene Name CCL2

Official Symbol CCL2

Synonyms C-C motif chemokine 2, CCL2, HC11, MCAF, MCP-1, Monocyte chemoattractant protein 1, Monocyte chemotactic and activating factor

Gene ID 6347

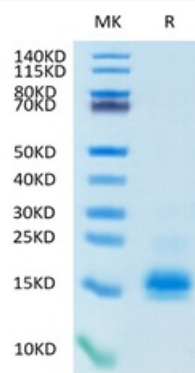
mRNA Refseq NM_002982.4

Protein Refseq NP_002973.1

MIM 158105

UniProt ID P13500

**Tris-Bis PAGE of
CCL2-500H**

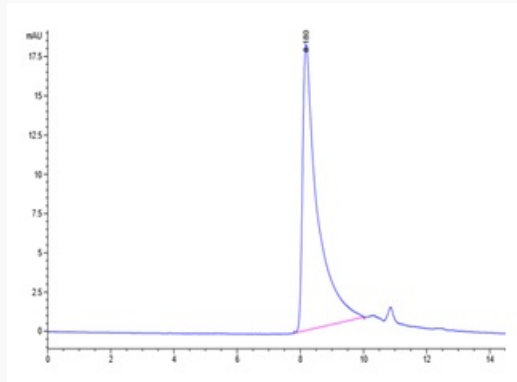


Tel: 1-631-559-9269 1-516-512-3133

Email: info@creative-biomart.com Fax: 1-631-938-8127

45-1 Ramsey Road, Shirley, NY 11967, USA

**SEC-HPLC of CCL2-
500H**



 Tel: 1-631-559-9269 1-516-512-3133

 Email: info@creative-biomart.com  Fax: 1-631-938-8127

 45-1 Ramsey Road, Shirley, NY 11967, USA