

Recombinant Human CCL2 protein, His-Avi-tagged, Biotinylated

Cat. No. CCL2-500HB **Lot. No.** (See product label)

SPECIFICATION

Product Overview	Biotinylated Recombinant Human MCP-1 is expressed from mammalian with a His Tag and Avi Tag at the C-terminal. It contains Gln24-Thr99.
Species	Human
Source	HEK293
ProteinLength	Gln24-Thr99
Description	Monocyte chemotactic protein-1 (MCP-1) (also referred to as chemokine (C-C motif) ligand 2 (CCL2)) is expressed by mainly inflammatory cells and endothelial cells. MCP-1 has been reported to play an important role in the pathogenesis of atherosclerosis and considerable evidence supports that the monocyte containing MCPs and macrophage influences the growth of other cell types within the atherosclerotic lesion. This review will focus on the general structure features of MCP-1 and its role in atherosclerosis.
Form	Supplied as 0.22um filtered solution in PBS (pH 7.4).
Molecular Mass	The protein has a predicted MW of 11.5 kDa. Due to glycosylation, the protein migrates to 15-20 KDa based on Bis-Tris PAGE result.
Endotoxin	Less than 1 EU per ug by the LAL method.

 Tel: 1-631-559-9269 1-516-512-3133

 Email: info@creative-biomart.com  Fax: 1-631-938-8127

 45-1 Ramsey Road, Shirley, NY 11967, USA

Purity	> 95% as determined by Bis-Tris PAGE; > 95% as determined by HPLC
Storage	The product should be stored at -70°C. Please do not repeated freeze-thaw cycles.
Conjugation	Biotin

GENE INFORMATION

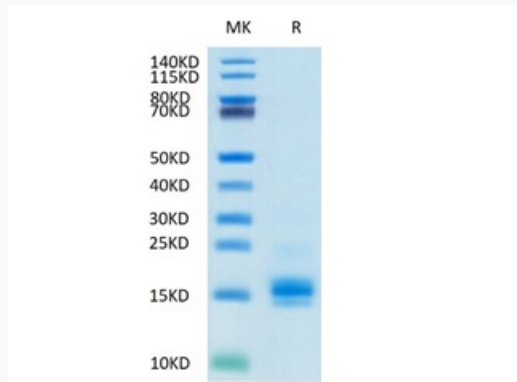
Gene Name	CCL2
Official Symbol	CCL2
Synonyms	C-C motif chemokine 2, CCL2, HC11, MCAF, MCP-1, Monocyte chemoattractant protein 1, Monocyte chemotactic and activating factor
Gene ID	6347
mRNA Refseq	NM_002982.4
Protein Refseq	NP_002973.1
MIM	158105
UniProt ID	P13500

 Tel: 1-631-559-9269 1-516-512-3133

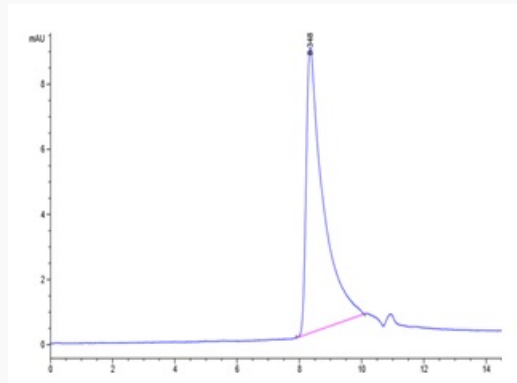
 Email: info@creative-biomart.com  Fax: 1-631-938-8127

 45-1 Ramsey Road, Shirley, NY 11967, USA

**Tris-Bis PAGE of
CCL2-500HB**



**SEC-HPLC of CCL2-
500HB**



 Tel: 1-631-559-9269 1-516-512-3133

 Email: info@creative-biomart.com  Fax: 1-631-938-8127

 45-1 Ramsey Road, Shirley, NY 11967, USA