

Recombinant Human CCL20 Protein, GST-Tagged

Cat. No. CCL20-0624H Lot. No. (See product label)

SPECIFICATION

Product Overview	Human CCL20 full-length ORF (AAH20698, 27 a.a. - 95 a.a.) recombinant protein with GST-tag at N-terminal.
Species	Human
Source	Wheat Germ
Description	This antimicrobial gene belongs to the subfamily of small cytokine CC genes. Cytokines are a family of secreted proteins involved in immunoregulatory and inflammatory processes. The CC cytokines are proteins characterized by two adjacent cysteines. The protein encoded by this gene displays chemotactic activity for lymphocytes and can repress proliferation of myeloid progenitors. Two transcript variants encoding different isoforms have been found for this gene. [provided by RefSeq, Sep 2014]
Molecular Mass	33.33 kDa
AA Sequence	SNFDCCLGYTDRILHPKFIVGFTRQLANEGCDINAIIFHTKKKLSVCANPKQTWVKYIV RLLSKKVKNM
Applications	Enzyme-linked Immunoabsorbent Assay Western Blot (Recombinant protein) Antibody Production Protein Array

 Tel: 1-631-559-9269 1-516-512-3133

 Email: info@creative-biomart.com  Fax: 1-631-938-8127

 45-1 Ramsey Road, Shirley, NY 11967, USA

Storage Store at -80 centigrade. Aliquot to avoid repeated freezing and thawing.

Storage Buffer 50 mM Tris-HCl, 10 mM reduced Glutathione, pH=8.0 in the elution buffer.

GENE INFORMATION

Gene Name [CCL20 chemokine \(C-C motif\) ligand 20 \[Homo sapiens \]](#)

Official Symbol [CCL20](#)

Synonyms

CCL20; chemokine (C-C motif) ligand 20; SCYA20, small inducible cytokine subfamily A (Cys Cys), member 20; C-C motif chemokine 20; CKb4; exodus 1; LARC; MIP 3a; ST38; exodus-1; MIP-3-alpha; CC chemokine LARC; beta chemokine exodus-1; beta-chemokine exodus-1; small-inducible cytokine A20; macrophage inflammatory protein 3 alpha; liver and activation-regulated chemokine; small inducible cytokine subfamily A (Cys-Cys), member 20; MIP3A; MIP-3a; SCYA20;

Gene ID [6364](#)

mRNA Refseq [NM_001130046](#)

Protein Refseq [NP_001123518](#)

MIM [601960](#)

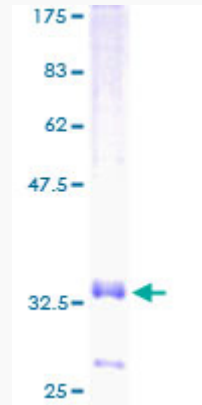
UniProt ID [P78556](#)

 Tel: 1-631-559-9269 1-516-512-3133

 Email: info@creative-biomart.com  Fax: 1-631-938-8127

 45-1 Ramsey Road, Shirley, NY 11967, USA

**Quality Control
Testing**



12.5% SDS-PAGE Stained with Coomassie Blue.

 Tel: 1-631-559-9269 1-516-512-3133

 Email: info@creative-biomart.com  Fax: 1-631-938-8127

 45-1 Ramsey Road, Shirley, NY 11967, USA