

Recombinant Human CCL20 Protein (Ser28-Met96), N-His tagged

Cat. No. CCL20-0752H **Lot. No.** (See product label)

SPECIFICATION

Product Overview	Recombinant Human CCL20/MIP-3-alpha (Ser28-Met96) fused with the N-His tag was expressed in E. coli.
Species	Human
Source	E.coli
ProteinLength	Ser28-Met96
Form	Lyophilized powder/frozen liquid
Molecular Mass	10.25 kDa
Purity	>90% as determined by SDS-PAGE.
Notes	For research use only.
Storage	Use a manual defrost freezer and avoid repeated freeze thaw cycles. Store at 2 to 8 centigrade for one week. Store at -20 to -80 centigrade for twelve months from the date of receipt.
Storage Buffer	0.01M PBS, pH 7.4, 0.02% NLS
Reconstitution	Reconstitute in sterile water for a stock solution.

 Tel: 1-631-559-9269 1-516-512-3133

 Email: info@creative-biomart.com  Fax: 1-631-938-8127

 45-1 Ramsey Road, Shirley, NY 11967, USA

Shipping They are shipped out with dry ice/blue ice unless customers require otherwise.

GENE INFORMATION

Gene Name CCL20 chemokine (C-C motif) ligand 20 [Homo sapiens (human)]

Official Symbol CCL20

Synonyms

CCL20; chemokine (C-C motif) ligand 20; SCYA20, small inducible cytokine subfamily A (Cys Cys), member 20; C-C motif chemokine 20; CKb4; exodus 1; LARC; MIP 3a; ST38; exodus-1; MIP-3-alpha; CC chemokine LARC; beta chemokine exodus-1; beta-chemokine exodus-1; small-inducible cytokine A20; macrophage inflammatory protein 3 alpha; liver and activation-regulated chemokine; small inducible cytokine subfamily A (Cys-Cys), member 20; MIP3A; MIP-3a; SCYA20;

Gene ID 6364

mRNA Refseq NM_001130046

Protein Refseq NP_001123518

MIM 601960

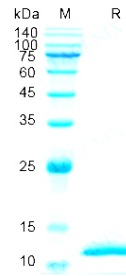
UniProt ID P78556

 Tel: 1-631-559-9269 1-516-512-3133

 Email: info@creative-biomart.com  Fax: 1-631-938-8127

 45-1 Ramsey Road, Shirley, NY 11967, USA

SDS-PAGE



 Tel: 1-631-559-9269 1-516-512-3133

 Email: info@creative-biomart.com  Fax: 1-631-938-8127

 45-1 Ramsey Road, Shirley, NY 11967, USA