

Recombinant Bovine CCL20 Protein (27-96 aa), His-SUMO-tagged

Cat. No. CCL20-1082B **Lot. No.** (See product label)

SPECIFICATION

Product Overview	Recombinant Bovine CCL20 Protein (27-96 aa) is produced by E. coli expression system. This protein is fused with a 6xHis-SUMO tag at the N-terminal. Protein Description: Full Length of Mature Protein.
Species	Bovine
Source	E.coli
ProteinLength	27-96 aa
Description	Chotactic factor that attracts lymphocytes and, slightly, neutrophils, but not monocytes. Inhibits proliferation of myeloid progenitors in colony formation assays. May be involved in formation and function of the mucosal lymphoid tissues by attracting lymphocytes and dendritic cells towards epithelial cells.
Form	Tris-based buffer, 50% glycerol
Molecular Mass	24.1 kDa
AA Sequence	ASNFDCCLRYTERILHPSILVGFTQQLANEACDINAVVFYTRKKLAVCADPKKKWVK QVVHMLSQRVKRM
Purity	> 90% as determined by SDS-PAGE.

 Tel: 1-631-559-9269 1-516-512-3133

 Email: info@creative-biomart.com  Fax: 1-631-938-8127

 45-1 Ramsey Road, Shirley, NY 11967, USA

Notes	Repeated freezing and thawing is not recommended. Store working aliquots at 4 centigrade for up to one week.
Storage	The shelf life is related to many factors, storage state, buffer ingredients, storage temperature and the stability of the protein itself. Generally, the shelf life of liquid form is 6 months at -20 centigrade/-80 centigrade. The shelf life of lyophilized form is 12 months at -20 centigrade/-80 centigrade.
Concentration	A hardcopy of COA with concentration instruction is sent along with the products.

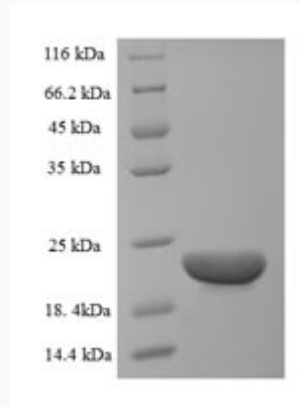
GENE INFORMATION

Gene Name	CCL20 C-C motif chemokine ligand 20 [Bos taurus (cattle)]
Official Symbol	CCL20
Gene ID	281666
mRNA Refseq	NM_174263
Protein Refseq	NP_776688
UniProt ID	Q8SQB1

 Tel: 1-631-559-9269 1-516-512-3133

 Email: info@creative-biomart.com  Fax: 1-631-938-8127

 45-1 Ramsey Road, Shirley, NY 11967, USA



(Tris-Glycine gel) Discontinuous SDS-PAGE (reduced) with 5% enrichment gel and 15% separation gel.

Tel: 1-631-559-9269 1-516-512-3133

Email: info@creative-biomart.com Fax: 1-631-938-8127

45-1 Ramsey Road, Shirley, NY 11967, USA