

Recombinant Human CCL20 protein

Cat. No. CCL20-11H **Lot. No.** (See product label)

SPECIFICATION

Product Overview	Recombinant Human CCL20 protein was expressed in Escherichia coli.
Species	Human
Source	E.coli
ProteinLength	70
Description	CCL20, also named LARC (Liver and Activation-regulated Chemokine), is encoded by CCL20 located on chromosome 2 in humans. The expression can be induced by LPS and some inflammatory cytokines, and it is at a high level in lymph nodes, PBL, fatal liver, fatal lung, appendix and so on. CCL20 has functions of chemotactic towards lymphocytes and dendritic cells. Additionally, it promotes the adhesion of memory CD4+ T cells and inhibits colony formation of bone marrow myeloid immature progenitors. CCL20 elicits its effects by binding with CCR6 receptor.
Form	Lyophilized from a 0.2µm filtered concentrated solution in 20 mM PB, pH 7.4, 100 mM NaCl.
Bio-activity	Fully biologically active when compared to standard. The biological activity determined by a chemotaxis bioassay using human T-lymphocytes is in a concentration range of 10-50 ng/ml.
Molecular Mass	Approximately 8.0 kDa, a single non-glycosylated polypeptide chain containing 70 amino acids.

 Tel: 1-631-559-9269 1-516-512-3133

 Email: info@creative-biomart.com  Fax: 1-631-938-8127

 45-1 Ramsey Road, Shirley, NY 11967, USA

AA Sequence	ASNFDCCCLGYTDRILHPKFIVGFTRQLANEGCDINAIIFHTKKKLSVCANPKQTTWVKYI VRLLSKKVKNM
Endotoxin	Less than 1 EU/μg of rHuMIP-3α/CCL20 as determined by LAL method.
Purity	>97% by SDS-PAGE and HPLC analysis.
Storage	Use a manual defrost freezer and avoid repeated freeze-thaw cycles. 12 months from date of receipt, -20 to -70 centigrade as supplied. 1 month, 2 to 8 centigrade under sterile conditions after reconstitution. 3 months, -20 to -70 centigrade under sterile conditions after reconstitution.
Reconstitution	We recommend that this vial be briefly centrifuged prior to opening to bring the contents to the bottom. Reconstitute in sterile distilled water or aqueous buffer containing 0.1 % BSA to a concentration of 0.1-1.0 mg/mL. Stock solutions should be apportioned into working aliquots and stored at ≤-20 centigrade. Further dilutions should be made in appropriate buffered solutions.

GENE INFORMATION

Gene Name	CCL20
Official Symbol	CCL20
Synonyms	CCL20; chemokine (C-C motif) ligand 20; SCYA20, small inducible cytokine subfamily A (Cys Cys), member 20; C-C motif chemokine 20; CKb4; exodus 1; LARC; MIP 3a; ST38; exodus-1; MIP-3-alpha; CC chemokine LARC; beta chemokine exodus-1; beta-chemokine exodus-1; small-inducible cytokine A20; macrophage inflammatory protein 3 alpha; liver and activation-regulated chemokine; small inducible cytokine subfamily A (Cys-Cys), member 20; MIP3A; MIP-3a; SCYA20;

 Tel: 1-631-559-9269 1-516-512-3133

 Email: info@creative-biomart.com  Fax: 1-631-938-8127

 45-1 Ramsey Road, Shirley, NY 11967, USA

Gene ID 6364

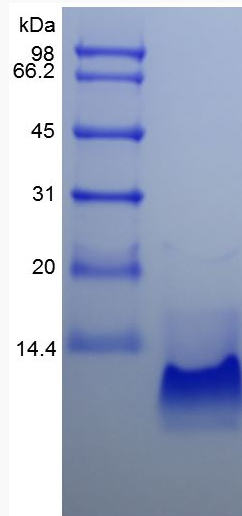
mRNA Refseq NM_001130046

Protein Refseq NP_001123518

MIM 601960

UniProt ID P78556

**SDS-PAGE of
CCL20-11H**



 Tel: 1-631-559-9269 1-516-512-3133

 Email: info@creative-biomart.com  Fax: 1-631-938-8127

 45-1 Ramsey Road, Shirley, NY 11967, USA