

## Recombinant Chicken Chemokine (C-C motif) Ligand 20

**Cat. No.** CCL20-136C    **Lot. No.** (See product label)

### SPECIFICATION

<b>Product Overview</b>	Recombinant Chicken CCL20 protein was expressed in Yeast and purified by using Ion-exchange chromatography, 8.3 kDa (72 aa).
<b>Species</b>	Chicken
<b>Source</b>	Yeast
<b>Description</b>	Chemokine (C-C motif) ligand 20 (CCL20) or liver activation regulated chemokine (LARC) or Macrophage Inflammatory Protein-3 (MIP3A) is a small cytokine belonging to the CC chemokine family. It is strongly chemotactic for lymphocytes and weakly attracts neutrophils. CCL20 is implicated in the formation and function of mucosal lymphoid tissues via chemoattraction of lymphocytes and dendritic cells towards the epithelial cells surrounding these tissues.
<b>Sequences Of Amino Acids</b>	QSNQDCCLSY SKVRLPRKVI KGFTEQLSGE VCDIDAIIFH TVRGLKACVN PKEDWVKKHL LFLSQKLKRM SM.
<b>Formulation/ Reconstitution</b>	Lyophilized. Reconstitute with sterile phosphate-buffered saline containing at least 0.1% carrier protein.
<b>Purity</b>	>95% as visualized by SDS-PAGE analysis.
<b>Purification</b>	Ion-exchange chromatography.
<b>Biological Activity</b>	In testing.

 Tel: 1-631-559-9269    1-516-512-3133

 Email: [info@creative-biomart.com](mailto:info@creative-biomart.com)     Fax: 1-631-938-8127

 45-1 Ramsey Road, Shirley, NY 11967, USA

**Storage** Stable for up to twelve months from date of receipt at -20°C. Stable for at least 3 months when stored in working aliquots with a carrier protein at -20°C. Avoid repeated freeze/thaw cycles.

**Pathways** Cytokine-cytokine receptor interaction

## GENE INFORMATION

**Gene Name** CCL20 chemokine (C-C motif) ligand 20 [ Gallus gallus ]

**Synonyms** CCL20; chemokine (C-C motif) ligand 20; MIP-3ALPHA; macrophage inflammatory protein 3alpha

**Gene ID** 395082

**mRNA Refseq** NM\_204438

**Protein Refseq** NP\_989769

**Chromosome Location** 9

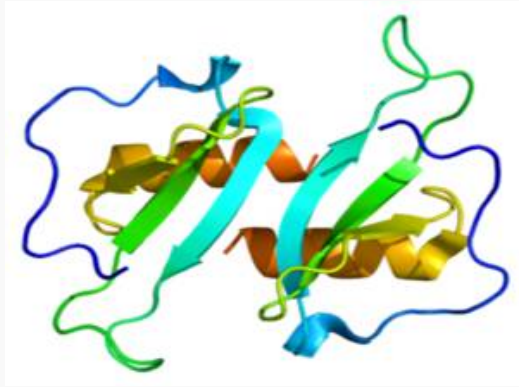
**Function** chemokine activity

 Tel: 1-631-559-9269 1-516-512-3133

 Email: [info@creative-biomart.com](mailto:info@creative-biomart.com)  Fax: 1-631-938-8127

 45-1 Ramsey Road, Shirley, NY 11967, USA

PDB rendering based  
on 1m8a



 Tel: 1-631-559-9269 1-516-512-3133

 Email: [info@creative-biomart.com](mailto:info@creative-biomart.com)  Fax: 1-631-938-8127

 45-1 Ramsey Road, Shirley, NY 11967, USA