

Recombinant *Macaca mulatta* CCL20 protein, GST-tagged

Cat. No. CCL20-15M Lot. No. (See product label)

SPECIFICATION

Product Overview	Recombinant <i>Macaca mulatta</i> CCL20 fused with GST tag was expressed in <i>E. coli</i> .
Species	<i>Macaca mulatta</i>
Source	<i>E. coli</i>
Form	PBS, pH 7.4, 50% glycerol
Molecular Mass	35.4kD
AA Sequence	ASNFDCCCLRYTDRILHPKFIVGFTQQLANETCDINAVVFHTKKGLSVCANPKQTWVK LIVRRLSKKINKM
Purity	>90%(SDS-PAGE)
Storage	Store at -20 centigrade, for extended storage, conserve at -20 centigrade or -80 centigrade. Repeated freezing and thawing is not recommended. Store working aliquots at 4 centigrade for up to one week.

GENE INFORMATION

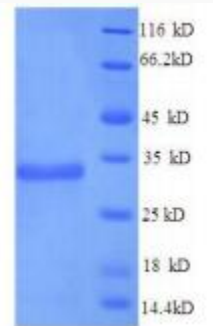
Gene Name	CCL20 C-C motif chemokine ligand 20 [<i>Macaca mulatta</i>]
Official Symbol	CCL20

 Tel: 1-631-559-9269 1-516-512-3133

 Email: info@creative-biomart.com  Fax: 1-631-938-8127

 45-1 Ramsey Road, Shirley, NY 11967, USA

Synonyms	CCL20; C-C motif chemokine 20; chemokine CCL20/MIP-3ALPHA
Gene ID	574182
mRNA Refseq	NM_001032854
Protein Refseq	NP_001028026
Chromosome Location	chromosome: 12
Pathway	Chemokine signaling pathway, organism-specific biosystem; Cytokine-cytokine receptor interaction, conserved biosystem; Rheumatoid arthritis, conserved biosystem



 Tel: 1-631-559-9269 1-516-512-3133

 Email: info@creative-biomart.com  Fax: 1-631-938-8127

 45-1 Ramsey Road, Shirley, NY 11967, USA