

Recombinant Human CCL20 protein, His-tagged

Cat. No. CCL20-161H Lot. No. (See product label)

SPECIFICATION

Product Overview	Recombinant Human CCL20 protein(P78556-1) (Ala27-Met96) was expressed in E. coli with a polyhistidine tag at the N-terminus.
Species	Human
Source	E. coli
ProteinLength	27-96 aa
Form	Lyophilized from sterile PBS, pH 7.4.
Molecular Mass	The recombinant human CCL20 consists of 87 amino acids and predicts a molecular mass of 10.2 KDa. It migrates as an approximately 10 KDa band in SDS-PAGE under reducing conditions.
Purity	> 90 % as determined by SDS-PAGE
Storage	Store it under sterile conditions at -20°C to -80°C upon receiving. Recommend to aliquot the protein into smaller quantities for optimal storage. Avoid repeated freeze-thaw cycles.
Reconstitution	It is recommended that sterile water be added to the vial to prepare a stock solution of 0.2 ug/ul. Centrifuge the vial at 4°C before opening to recover the entire contents.

GENE INFORMATION

 Tel: 1-631-559-9269 1-516-512-3133

 Email: info@creative-biomart.com  Fax: 1-631-938-8127

 45-1 Ramsey Road, Shirley, NY 11967, USA

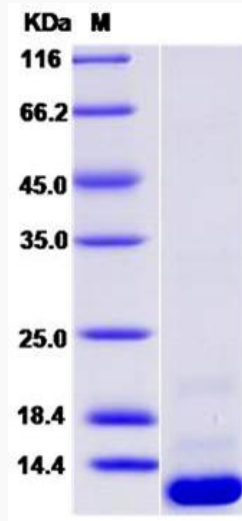
Gene Name	CCL20 chemokine (C-C motif) ligand 20 [Homo sapiens]
Official Symbol	CCL20
Synonyms	CCL20; chemokine (C-C motif) ligand 20; SCYA20, small inducible cytokine subfamily A (Cys Cys), member 20; C-C motif chemokine 20; CKb4; exodus 1; LARC; MIP 3a; ST38; exodus-1; MIP-3-alpha; CC chemokine LARC; beta chemokine exodus-1; beta-chemokine exodus-1; small-inducible cytokine A20; macrophage inflammatory protein 3 alpha; liver and activation-regulated chemokine; small inducible cytokine subfamily A (Cys-Cys), member 20; MIP3A; MIP-3a; SCYA20;
Gene ID	6364
mRNA Refseq	NM_001130046
Protein Refseq	NP_001123518
MIM	601960
UniProt ID	P78556

 Tel: 1-631-559-9269 1-516-512-3133

 Email: info@creative-biomart.com  Fax: 1-631-938-8127

 45-1 Ramsey Road, Shirley, NY 11967, USA

SDS-PAGE



 Tel: 1-631-559-9269 1-516-512-3133

 Email: info@creative-biomart.com  Fax: 1-631-938-8127

 45-1 Ramsey Road, Shirley, NY 11967, USA