

## Recombinant Human CCL20 protein, rFc-tagged

Cat. No. CCL20-3700H Lot. No. (See product label)

### SPECIFICATION

<b>Product Overview</b>	Recombinant Human CCL20 protein(P78556-1)(Ala27-Met96), fused with N-terminal rFc tag, was expressed in HEK293.
<b>Species</b>	Human
<b>Source</b>	HEK293
<b>Form</b>	Lyophilized from 0.22 µm filtered solution in PBS, pH 7.4. Normally 5% trehalose and 5% mannitol are added as protectants before lyophilization.
<b>Molecular Mass</b>	35.2 kDa
<b>Endotoxin</b>	<0.1 EU/µg protein, LAL method
<b>Purity</b>	>90 %, SDS-PAGE
<b>Storage</b>	It is recommended that the protein be aliquoted for optimal storage. Avoid repeated freeze-thaw cycles. Until expiry date, -20°C to -80°C as lyophilized proteins. 3 months, -20°C to -80°C under sterile conditions after reconstitution.
<b>Reconstitution</b>	Briefly centrifuge the tube before opening. Reconstitute at 0.1-0.5 mg/mL in sterile water.

### GENE INFORMATION

 Tel: 1-631-559-9269 1-516-512-3133

 Email: [info@creative-biomart.com](mailto:info@creative-biomart.com)  Fax: 1-631-938-8127

 45-1 Ramsey Road, Shirley, NY 11967, USA

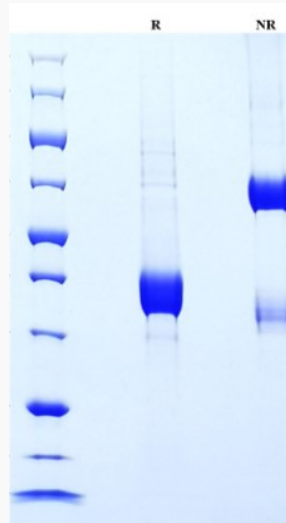
<b>Gene Name</b>	CCL20 chemokine (C-C motif) ligand 20 [ Homo sapiens ]
<b>Official Symbol</b>	CCL20
<b>Synonyms</b>	CCL20; chemokine (C-C motif) ligand 20; SCYA20, small inducible cytokine subfamily A (Cys Cys), member 20; C-C motif chemokine 20; CKb4; exodus 1; LARC; MIP 3a; ST38; exodus-1; MIP-3-alpha; CC chemokine LARC; beta chemokine exodus-1; beta-chemokine exodus-1; small-inducible cytokine A20; macrophage inflammatory protein 3 alpha; liver and activation-regulated chemokine; small inducible cytokine subfamily A (Cys-Cys), member 20; MIP3A; MIP-3a; SCYA20;
<b>Gene ID</b>	6364
<b>mRNA Refseq</b>	NM_001130046
<b>Protein Refseq</b>	NP_001123518
<b>MIM</b>	601960
<b>UniProt ID</b>	P78556

 Tel: 1-631-559-9269 1-516-512-3133

 Email: [info@creative-biomart.com](mailto:info@creative-biomart.com)  Fax: 1-631-938-8127

 45-1 Ramsey Road, Shirley, NY 11967, USA

SDS-PAGE



 Tel: 1-631-559-9269 1-516-512-3133

 Email: [info@creative-biomart.com](mailto:info@creative-biomart.com)  Fax: 1-631-938-8127

 45-1 Ramsey Road, Shirley, NY 11967, USA