

## Recombinant Human CCL20 Protein, GST-tagged

**Cat. No.** CCL20-641H    **Lot. No.** (See product label)

### SPECIFICATION

<b>Product Overview</b>	Recombinant Human CCL20 Protein (Ala27-Met96) with GST tag was expressed in E. coli.
<b>Species</b>	Human
<b>Source</b>	E.coli
<b>ProteinLength</b>	Ala27-Met96
<b>Description</b>	This antimicrobial gene belongs to the subfamily of small cytokine CC genes. Cytokines are a family of secreted proteins involved in immunoregulatory and inflammatory processes. The CC cytokines are proteins characterized by two adjacent cysteines. The protein encoded by this gene displays chemotactic activity for lymphocytes and can repress proliferation of myeloid progenitors. Two transcript variants encoding different isoforms have been found for this gene.
<b>Form</b>	Freeze-dried powder
<b>Molecular Mass</b>	Predicted Molecular Mass: 38.0 kDa; Accurate Molecular Mass: 40 kDa
<b>Purity</b>	> 90%
<b>Applications</b>	Cell culture; Activity Assays.
<b>Stability</b>	The thermal stability is described by the loss rate. The loss rate was determined by

 Tel: 1-631-559-9269    1-516-512-3133

 Email: [info@creative-biomart.com](mailto:info@creative-biomart.com)     Fax: 1-631-938-8127

 45-1 Ramsey Road, Shirley, NY 11967, USA

accelerated thermal degradation test, that is, incubate the protein at 37 centigrade for 48h, and no obvious degradation and precipitation were observed. The loss rate is less than 5% within the expiration date under appropriate storage condition.

**Storage**

Avoid repeated freeze/thaw cycles. Store at 2-8 centigrade for one month. Aliquot and store at -80 centigrade for 12 months.

**Storage Buffer**

20mM Tris, 150mM NaCl, pH8.0, containing 1mM EDTA, 1mM DTT, 0.01% SKL, 5% Trehalose and Proclin300.

**Reconstitution**

Reconstitute in 20mM Tris, 150mM NaCl (pH8.0) to a concentration of 0.1-1.0 mg/mL. Do not vortex.

## GENE INFORMATION

**Gene Name**

[CCL20 chemokine \(C-C motif\) ligand 20 \[ Homo sapiens \(human\) \]](#)

**Official Symbol**

[CCL20](#)

**Synonyms**

CCL20; chemokine (C-C motif) ligand 20; SCYA20, small inducible cytokine subfamily A (Cys Cys), member 20; C-C motif chemokine 20; CKb4; exodus 1; LARC; MIP 3a; ST38; exodus-1; MIP-3-alpha; CC chemokine LARC; beta chemokine exodus-1; beta-chemokine exodus-1; small-inducible cytokine A20; macrophage inflammatory protein 3 alpha; liver and activation-regulated chemokine; small inducible cytokine subfamily A (Cys-Cys), member 20; MIP3A; MIP-3a; SCYA20;

**Gene ID**

[6364](#)

**mRNA Refseq**

[NM\\_001130046](#)

**Protein Refseq**

[NP\\_001123518](#)

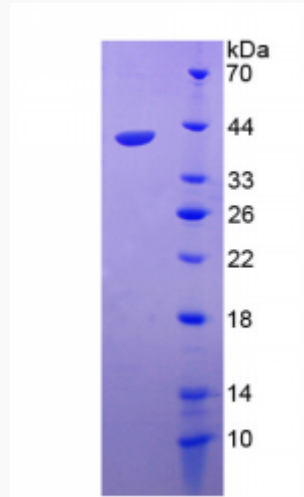
 Tel: 1-631-559-9269 1-516-512-3133

 Email: [info@creative-biomart.com](mailto:info@creative-biomart.com)  Fax: 1-631-938-8127

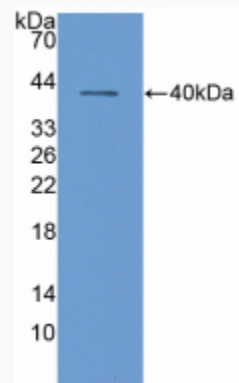
 45-1 Ramsey Road, Shirley, NY 11967, USA

MIM 601960

UniProt ID P78556



WB



Tel: 1-631-559-9269 1-516-512-3133

Email: [info@creative-biomart.com](mailto:info@creative-biomart.com) Fax: 1-631-938-8127

45-1 Ramsey Road, Shirley, NY 11967, USA