

Active Recombinant Human CCL20 protein, His-GST-tagged

Cat. No. CCL20-717H Lot. No. (See product label)

SPECIFICATION

Product Overview	Active Recombinant Human CCL20 protein(P78556)(27~96 aa), fused with N-terminal His tag and GST tag, was expressed in E.coli.
Species	Human
Source	E.coli
ProteinLength	27-96 aa
Form	Lyophilized from sterile 20mM Tris, 150mM NaCl, pH8.0, containing 1mM EDTA, 1mM DTT, 0.01% SKL, 5% Trehalose and Proclin300.
Bio-activity	Macrophage Inflammatory Protein 3 Alpha (MIP3a) also known as Chemokine (C-C motif) ligand 20 (CCL20) or liver activation regulated chemokine (LARC) is a small cytokine belonging to the CC chemokine family. It is strongly chemotactic for lymphocytes and weakly attracts neutrophils. MIP3a is implicated in the formation and function of mucosal lymphoid tissues via chemoattraction of lymphocytes and dendritic cells towards the epithelial cells surrounding these tissues. It is expressed in several tissues such as peripheral blood lymphocytes, lymph nodes, liver, appendix, fetal lung. Expression of MIP3a can be induced by microbial factors such as lipopolysaccharide (LPS), and inflammatory cytokines such as tumor necrosis factor and interferon- γ , and down-regulated by IL-10. Besides, Interleukin 1 Alpha (IL1a) has been identified as an interactor of MIP3a, thus a binding ELISA assay was conducted to detect the interaction of recombinant human MIP3a and recombinant human IL1a.

 Tel: 1-631-559-9269 1-516-512-3133

 Email: info@creative-biomart.com  Fax: 1-631-938-8127

 45-1 Ramsey Road, Shirley, NY 11967, USA

Briefly, MIP3a were diluted serially in PBS, with 0.01% BSA (pH 7.4). Duplicate samples of 100 ul were then transferred to IL1a-coated microtiter wells and incubated for 2h at 37°C. Wells were washed with PBST and incubated for 1h with anti-MIP3a pAb, then aspirated and washed 3 times. After incubation with HRP labelled secondary antibody, wells were aspirated and washed 5 times. With the addition of substrate solution, wells were incubated 15-25 minutes at 37°C. Finally, add 50 µ stop solution to the wells and read at 450nm immediately. The binding activity of MIP3a and IL1a was shown, and this effect was in a dose dependent manner, the EC50 for this effect is 0.676 ug/mL.

Molecular Mass 38.0kDa

Endotoxin <1.0EU per 1µg (determined by the LAL method).

Purity > 90% as determined by SDS-PAGE.

Storage Avoid repeated freeze/thaw cycles. Store at -20°C for 12 months. Aliquot and store at -80°C for 12 months.

Reconstitution Reconstitute in 20mM Tris, 150mM NaCl (pH8.0) to a concentration of 0.1-1.0 mg/mL. Do not vortex.

GENE INFORMATION

Gene Name CCL20 chemokine (C-C motif) ligand 20 [Homo sapiens]

Official Symbol CCL20

Synonyms CCL20; chemokine (C-C motif) ligand 20; SCYA20, small inducible cytokine subfamily A (Cys Cys), member 20; C-C motif chemokine 20; CKb4; exodus 1; LARC; MIP 3a; ST38; exodus-1; MIP-3-alpha; CC chemokine LARC; beta chemokine exodus-1; beta-

 Tel: 1-631-559-9269 1-516-512-3133

 Email: info@creative-biomart.com  Fax: 1-631-938-8127

 45-1 Ramsey Road, Shirley, NY 11967, USA

chemokine exodus-1; small-inducible cytokine A20; macrophage inflammatory protein 3 alpha; liver and activation-regulated chemokine; small inducible cytokine subfamily A (Cys-Cys), member 20; MIP3A; MIP-3a; SCYA20;

Gene ID 6364

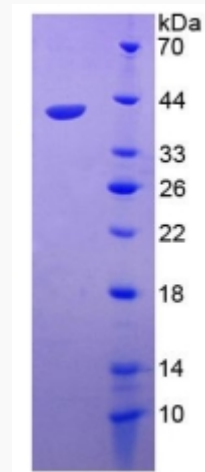
mRNA Refseq NM_001130046

Protein Refseq NP_001123518

MIM 601960

UniProt ID P78556

SDS-PAGE

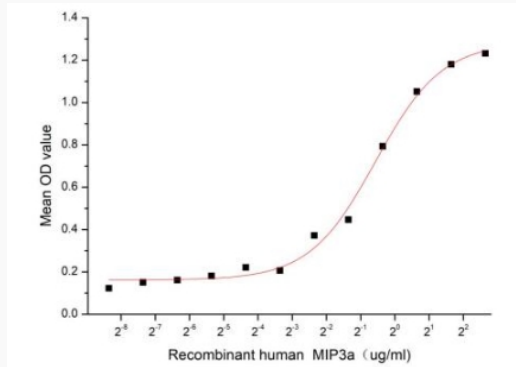


 Tel: 1-631-559-9269 1-516-512-3133

 Email: info@creative-biomart.com  Fax: 1-631-938-8127

 45-1 Ramsey Road, Shirley, NY 11967, USA

Activity



 Tel: 1-631-559-9269 1-516-512-3133

 Email: info@creative-biomart.com  Fax: 1-631-938-8127

 45-1 Ramsey Road, Shirley, NY 11967, USA