

## Recombinant Mouse CCL21 protein

Cat. No. CCL21-328M Lot. No. (See product label)

### SPECIFICATION

<b>Product Overview</b>	Recombinant Mouse CCL21 protein was expressed in Escherichia coli.
<b>Species</b>	Mouse
<b>Source</b>	E.coli
<b>ProteinLength</b>	110
<b>Description</b>	CCL21 is encoded by CCL21 gene that is located in Chr. 4 and shows 21-33 % identity to other CC chemokines. This chemokine contains the four conserved cysteines characteristic of $\beta$ chemokines plus two additional cysteines in its unusually long carboxylterminal domain. Human and mouse CCL21 are highly conserved, exhibiting 86 % amino acid sequence identity. CCL21 is highly expressed in lymph nodes of certain endothelial cells, and in the spleen and appendix. It elicits effects by binding with CCR7, having functions of T and B lymphocytes chemotaxis and inhibiting hematopoiesis.
<b>Form</b>	Lyophilized from a 0.2 $\mu$ m filtered concentrated solution in 20 mM PB, pH 7.4, 150 mM NaCl.
<b>Bio-activity</b>	Fully biologically active when compared to standard. The biological activity determined by a chemotaxis bioassay using murine T-lymphocytes is in a concentration range of 10-100 ng/ml.
<b>Molecular Mass</b>	Approximately 12.1 kDa, a single, non-glycosylated polypeptide chain containing 110

 Tel: 1-631-559-9269 1-516-512-3133

 Email: [info@creative-biomart.com](mailto:info@creative-biomart.com)  Fax: 1-631-938-8127

 45-1 Ramsey Road, Shirley, NY 11967, USA

	amino acids.
<b>AA Sequence</b>	SDGGGQDCCLKYSQKKIPYSIVRGYRKQEPSLGCPIAILFLPRKHSKPELCANPEE GWVQNLMRRLDQPPAPGKQSPGCRKNRGTSTKSGKKGKSGKCKRTEQTQPSRG
<b>Endotoxin</b>	Less than 1 EU/μg of rMuExodus-2/CCL21 as determined by LAL method.
<b>Purity</b>	>97% by SDS-PAGE and HPLC analysis.
<b>Storage</b>	Use a manual defrost freezer and avoid repeated freeze-thaw cycles. 12 months from date of receipt, -20 to -70 centigrade as supplied. 1 month, 2 to 8 centigrade under sterile conditions after reconstitution. 3 months, -20 to -70 centigrade under sterile conditions after reconstitution.
<b>Reconstitution</b>	We recommend that this vial be briefly centrifuged prior to opening to bring the contents to the bottom. Reconstitute in sterile distilled water or aqueous buffer containing 0.1 % BSA to a concentration of 0.1-1.0 mg/mL. Stock solutions should be apportioned into working aliquots and stored at ≤-20 centigrade. Further dilutions should be made in appropriate buffered solutions.

## GENE INFORMATION

<b>Gene Name</b>	CCL21
<b>Official Symbol</b>	CCL21
<b>Synonyms</b>	6Ckine, Beta-chemokine Exodus-2, SLC
<b>Gene ID</b>	65956
<b>mRNA Refseq</b>	NM_023052.2

 Tel: 1-631-559-9269 1-516-512-3133

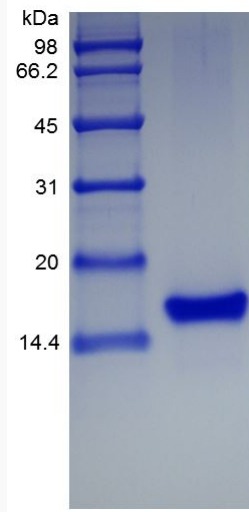
 Email: [info@creative-biomart.com](mailto:info@creative-biomart.com)  Fax: 1-631-938-8127

 45-1 Ramsey Road, Shirley, NY 11967, USA

Protein Refseq NP\_075539.1

UniProt ID P86792

SDS-PAGE of  
CCL21-328M



 Tel: 1-631-559-9269 1-516-512-3133

 Email: [info@creative-biomart.com](mailto:info@creative-biomart.com)  Fax: 1-631-938-8127

 45-1 Ramsey Road, Shirley, NY 11967, USA