

## Active Recombinant Human CCL21 protein

Cat. No. CCL21-626H Lot. No. (See product label)

### SPECIFICATION

<b>Product Overview</b>	Active Recombinant Human CCL21 protein(O00585) (Met 1-Pro 134) was expressed and purified in Insect Cells.
<b>Species</b>	Human
<b>Source</b>	Insect Cells
<b>ProteinLength</b>	1-134 aa
<b>Form</b>	Lyophilized from sterile 40mM Tris, 0.3 M NaCl, pH 7.4.
<b>Bio-activity</b>	Measured by its binding ability in a functional ELISA. Immobilized human CCL21 at 2 µg/ml (100 µl/well) can bind human IGFBP7 with a linear ranger of 0.16-4 µg/ml.
<b>Molecular Mass</b>	The secreted recombinant human CCL21 consists of 111 amino acids and predicts a molecular mass of 12.3 kDa. It migrates as an approximately 18 kDa band in SDS-PAGE under reducing conditions.
<b>Endotoxin</b>	< 1.0 EU per µg protein as determined by the LAL method.
<b>Purity</b>	> 98 % as determined by SDS-PAGE
<b>Storage</b>	Store it under sterile conditions at -20°C to -80°C upon receiving. Recommend to aliquot the protein into smaller quantities for optimal storage. Avoid repeated freeze-thaw cycles.

 Tel: 1-631-559-9269 1-516-512-3133

 Email: [info@creative-biomart.com](mailto:info@creative-biomart.com)  Fax: 1-631-938-8127

 45-1 Ramsey Road, Shirley, NY 11967, USA

**Reconstitution** It is recommended that sterile water be added to the vial to prepare a stock solution of 0.2 ug/ul. Centrifuge the vial at 4°C before opening to recover the entire contents.

## GENE INFORMATION

**Gene Name** CCL21 chemokine (C-C motif) ligand 21 [ Homo sapiens ]

**Official Symbol** CCL21

**Synonyms** CCL21; chemokine (C-C motif) ligand 21; SCYA21, small inducible cytokine subfamily A (Cys Cys), member 21; C-C motif chemokine 21; 6Ckine; beta chemokine exodus 2; CKb9; ECL; Efficient Chemoattractant for Lymphocytes; exodus 2; secondary lymphoid tissue chemokine; SLC; TCA4; exodus-2; beta chemokine exodus-2; beta-chemokine exodus-2; small-inducible cytokine A21; secondary lymphoid-tissue chemokine; small inducible cytokine subfamily A (Cys-Cys), member 21; SCYA21; MGC34555;

**Gene ID** 6366

**mRNA Refseq** NM\_002989

**Protein Refseq** NP\_002980

**MIM** 602737

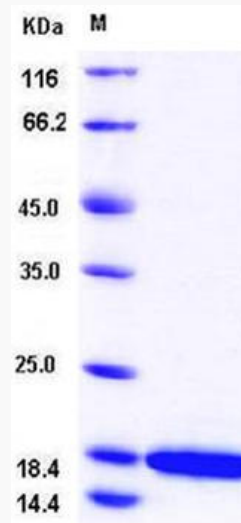
**UniProt ID** O00585

 Tel: 1-631-559-9269 1-516-512-3133

 Email: [info@creative-biomart.com](mailto:info@creative-biomart.com)  Fax: 1-631-938-8127

 45-1 Ramsey Road, Shirley, NY 11967, USA

SDS-PAGE



 Tel: 1-631-559-9269 1-516-512-3133

 Email: [info@creative-biomart.com](mailto:info@creative-biomart.com)  Fax: 1-631-938-8127

 45-1 Ramsey Road, Shirley, NY 11967, USA