

Recombinant Human CCL22 Protein, GST-Tagged

Cat. No. CCL22-0627H **Lot. No.** (See product label)

SPECIFICATION

Product Overview	Human CCL22 full-length ORF (AAH27952, 1 a.a. - 93 a.a.) recombinant protein with GST-tag at N-terminal.
Species	Human
Source	Wheat Germ
Description	<p>This antimicrobial gene is one of several Cys-Cys (CC) cytokine genes clustered on the q arm of chromosome 16. Cytokines are a family of secreted proteins involved in immunoregulatory and inflammatory processes. The CC cytokines are proteins characterized by two adjacent cysteines. The cytokine encoded by this gene displays chemotactic activity for monocytes, dendritic cells, natural killer cells and for chronically activated T lymphocytes. It also displays a mild activity for primary activated T lymphocytes and has no chemoattractant activity for neutrophils, eosinophils and resting T lymphocytes. The product of this gene binds to chemokine receptor CCR4. This chemokine may play a role in the trafficking of activated T lymphocytes to inflammatory sites and other aspects of activated T lymphocyte physiology. [provided by RefSeq, Sep 2014]</p>
Molecular Mass	35.97 kDa
AA Sequence	MARLQTALLVVLVLLAVALQATEAGPYGANMEDSVCCRDYVRYRLPLRVVKHFWTSDSCPRPGVLLTFRDKEICADPRVPWVKMILNKLSQ
Applications	Enzyme-linked Immunoabsorbent Assay

 Tel: 1-631-559-9269 1-516-512-3133

 Email: info@creative-biomart.com  Fax: 1-631-938-8127

 45-1 Ramsey Road, Shirley, NY 11967, USA

Western Blot (Recombinant protein)
 Antibody Production
 Protein Array

Storage Store at -80 centigrade. Aliquot to avoid repeated freezing and thawing.

Storage Buffer 50 mM Tris-HCl, 10 mM reduced Glutathione, pH=8.0 in the elution buffer.

GENE INFORMATION

Gene Name CCL22 chemokine (C-C motif) ligand 22 [Homo sapiens]

Official Symbol CCL22

Synonyms

CCL22; chemokine (C-C motif) ligand 22; SCYA22, small inducible cytokine subfamily A (Cys Cys), member 22; C-C motif chemokine 22; A 152E5.1; ABCD 1; DC/B CK; MDC; MGC34554; STCP 1; MDC(1-69); CC chemokine STCP-1; macrophage-derived chemokine; small inducible cytokine A22; small-inducible cytokine A22; stimulated T cell chemotactic protein 1; stimulated T-cell chemotactic protein 1; small inducible cytokine subfamily A (Cys-Cys), member 22; ABCD-1; SCYA22; STCP-1; DC/B-CK; A-152E5.1;

Gene ID 6367

mRNA Refseq NM_002990

Protein Refseq NP_002981

MIM 602957

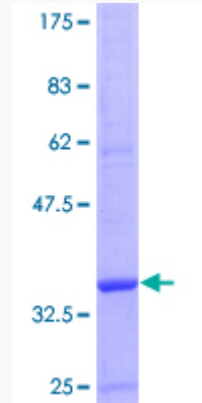
UniProt ID O00626

 Tel: 1-631-559-9269 1-516-512-3133

 Email: info@creative-biomart.com  Fax: 1-631-938-8127

 45-1 Ramsey Road, Shirley, NY 11967, USA

**Quality Control
Testing**



12.5% SDS-PAGE Stained with Coomassie Blue.

 Tel: 1-631-559-9269 1-516-512-3133

 Email: info@creative-biomart.com  Fax: 1-631-938-8127

 45-1 Ramsey Road, Shirley, NY 11967, USA