

Recombinant Human CCL22 Protein (Gly25-Gln93), N-GST tagged

Cat. No. CCL22-1268H Lot. No. (See product label)

SPECIFICATION

Product Overview	Recombinant Human CCL22/MDC (Gly25-Gln93) fused with the N-GST tag was expressed in E. coli.
Species	Human
Source	E.coli
ProteinLength	Gly25-Gln93
Form	Lyophilized powder/frozen liquid
Molecular Mass	34.92 kDa
Purity	>90% as determined by SDS-PAGE.
Notes	For research use only.
Storage	Use a manual defrost freezer and avoid repeated freeze thaw cycles. Store at 2 to 8 centigrade for one week. Store at -20 to -80 centigrade for twelve months from the date of receipt.
Storage Buffer	0.01M PBS, pH 7.4, 0.02% NLS
Reconstitution	Reconstitute in sterile water for a stock solution.

 Tel: 1-631-559-9269 1-516-512-3133

 Email: info@creative-biomart.com  Fax: 1-631-938-8127

 45-1 Ramsey Road, Shirley, NY 11967, USA

Shipping They are shipped out with dry ice/blue ice unless customers require otherwise.

GENE INFORMATION

Gene Name CCL22 chemokine (C-C motif) ligand 22 [Homo sapiens (human)]

Official Symbol CCL22

Synonyms

CCL22; chemokine (C-C motif) ligand 22; SCYA22, small inducible cytokine subfamily A (Cys Cys), member 22; C-C motif chemokine 22; A 152E5.1; ABCD 1; DC/B CK; MDC; MGC34554; STCP 1; MDC (1-69); CC chemokine STCP-1; macrophage-derived chemokine; small inducible cytokine A22; small-inducible cytokine A22; stimulated T cell chemotactic protein 1; stimulated T-cell chemotactic protein 1; small inducible cytokine subfamily A (Cys-Cys), member 22; ABCD-1; SCYA22; STCP-1; DC/B-CK; A-152E5.1;

Gene ID 6367

mRNA Refseq NM_002990

Protein Refseq NP_002981

MIM 602957

UniProt ID O00626

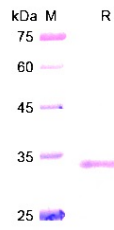
 Tel: 1-631-559-9269 1-516-512-3133

 Email: info@creative-biomart.com  Fax: 1-631-938-8127

 45-1 Ramsey Road, Shirley, NY 11967, USA



SDS-PAGE



Tel: 1-631-559-9269 1-516-512-3133

Email: info@creative-biomart.com Fax: 1-631-938-8127

45-1 Ramsey Road, Shirley, NY 11967, USA