

## Recombinant Human CCL22, His-tagged

Cat. No. CCL22-29753TH Lot. No. (See product label)

### SPECIFICATION

|                         |  |
|-------------------------|--|
| <b>Product Overview</b> | Recombinant Human CCL22(O00626) (Gly 25-Gln 93) was expressed in E.coli, with a polyhistidine tag at the N-terminus.   |
| <b>Species</b>          | Human  |
| <b>Source</b>           | E.coli   |
| <b>ProteinLength</b>    | 25-93 aa   |
| <b>Form</b>             | Lyophilized from sterile 30% Acetonitrile, 0.1% TFA.   |
| <b>Molecular Mass</b>   | The recombinant human CCL22 consisting of 84 amino acids and has a calculated molecular mass of 9.7 KDa. It migrates as an 10 kDa band in SDS-PAGE under reducing conditions.        |
| <b>Purity</b>           | > 90 % as determined by SDS-PAGE   |
| <b>Storage</b>          | Store it under sterile conditions at -20°C to -80°C upon receiving. Recommend to aliquot the protein into smaller quantities for optimal storage. Avoid repeated freeze-thaw cycles. |
| <b>Reconstitution</b>   | It is recommended that sterile water be added to the vial to prepare a stock solution of 0.2 ug/ul. Centrifuge the vial at 4°C before opening to recover the entire contents.        |

### GENE INFORMATION

 Tel: 1-631-559-9269 1-516-512-3133

 Email: [info@creative-biomart.com](mailto:info@creative-biomart.com)  Fax: 1-631-938-8127

 45-1 Ramsey Road, Shirley, NY 11967, USA

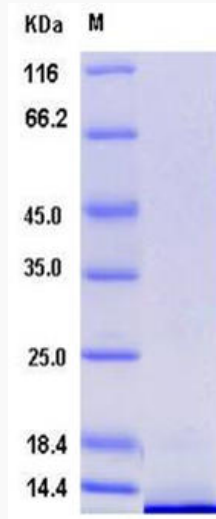
|                        |  |
|------------------------|--|
| <b>Gene Name</b>       | CCL22 chemokine (C-C motif) ligand 22 [ Homo sapiens ]   |
| <b>Official Symbol</b> | CCL22  |
| <b>Synonyms</b>        | CCL22; chemokine (C-C motif) ligand 22; SCYA22, small inducible cytokine subfamily A (Cys Cys), member 22; C-C motif chemokine 22; A 152E5.1; ABCD 1; DC/B CK; MDC; MGC34554; STCP 1; MDC(1-69); CC chemokine STCP-1; macrophage-derived chemokine; small inducible cytokine A22; small-inducible cytokine A22; stimulated T cell chemotactic protein 1; stimulated T-cell chemotactic protein 1; small inducible cytokine subfamily A (Cys-Cys), member 22; ABCD-1; SCYA22; STCP-1; DC/B-CK; A-152E5.1; |
| <b>Gene ID</b>         | 6367   |
| <b>mRNA Refseq</b>     | NM_002990  |
| <b>Protein Refseq</b>  | NP_002981  |
| <b>MIM</b>             | 602957   |
| <b>UniProt ID</b>      | O00626   |

 Tel: 1-631-559-9269 1-516-512-3133

 Email: [info@creative-biomart.com](mailto:info@creative-biomart.com)  Fax: 1-631-938-8127

 45-1 Ramsey Road, Shirley, NY 11967, USA

**SDS-PAGE**



 Tel: 1-631-559-9269 1-516-512-3133

 Email: [info@creative-biomart.com](mailto:info@creative-biomart.com)  Fax: 1-631-938-8127

 45-1 Ramsey Road, Shirley, NY 11967, USA