

## Recombinant Human CCL22 protein, rFc-tagged

Cat. No. CCL22-3701H Lot. No. (See product label)

### SPECIFICATION

<b>Product Overview</b>	Recombinant Human CCL22 protein(O00626)(Gly25-Gln93), fused with N-terminal rFc tag, was expressed in HEK293.
<b>Species</b>	Human
<b>Source</b>	HEK293
<b>Form</b>	Lyophilized from 0.22 µm filtered solution in PBS, pH 7.4. Normally 5% trehalose and 5% mannitol are added as protectants before lyophilization.
<b>Molecular Mass</b>	35.3 kDa
<b>Endotoxin</b>	<0.1 EU/µg protein, LAL method
<b>Purity</b>	>90 %, SDS-PAGE
<b>Storage</b>	It is recommended that the protein be aliquoted for optimal storage. Avoid repeated freeze-thaw cycles. Until expiry date, -20°C to -80°C as lyophilized proteins. 3 months, -20°C to -80°C under sterile conditions after reconstitution.
<b>Reconstitution</b>	Briefly centrifuge the tube before opening. Reconstitute at 0.1-0.5 mg/mL in sterile water.

### GENE INFORMATION

 Tel: 1-631-559-9269 1-516-512-3133

 Email: [info@creative-biomart.com](mailto:info@creative-biomart.com)  Fax: 1-631-938-8127

 45-1 Ramsey Road, Shirley, NY 11967, USA

<b>Gene Name</b>	CCL22 chemokine (C-C motif) ligand 22 [ Homo sapiens ]
<b>Official Symbol</b>	CCL22
<b>Synonyms</b>	CCL22; chemokine (C-C motif) ligand 22; SCYA22, small inducible cytokine subfamily A (Cys Cys), member 22; C-C motif chemokine 22; A 152E5.1; ABCD 1; DC/B CK; MDC; MGC34554; STCP 1; MDC(1-69); CC chemokine STCP-1; macrophage-derived chemokine; small inducible cytokine A22; small-inducible cytokine A22; stimulated T cell chemotactic protein 1; stimulated T-cell chemotactic protein 1; small inducible cytokine subfamily A (Cys-Cys), member 22; ABCD-1; SCYA22; STCP-1; DC/B-CK; A-152E5.1;
<b>Gene ID</b>	6367
<b>mRNA Refseq</b>	NM_002990
<b>Protein Refseq</b>	NP_002981
<b>MIM</b>	602957
<b>UniProt ID</b>	O00626

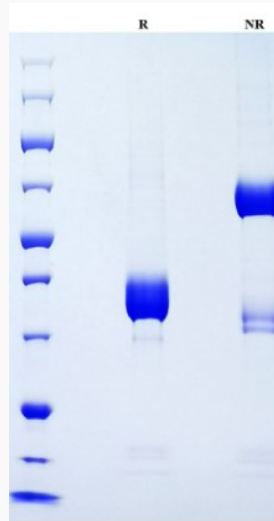
 Tel: 1-631-559-9269 1-516-512-3133

 Email: [info@creative-biomart.com](mailto:info@creative-biomart.com)  Fax: 1-631-938-8127

 45-1 Ramsey Road, Shirley, NY 11967, USA



SDS-PAGE



Tel: 1-631-559-9269 1-516-512-3133

Email: [info@creative-biomart.com](mailto:info@creative-biomart.com) Fax: 1-631-938-8127

45-1 Ramsey Road, Shirley, NY 11967, USA