

Active Recombinant Human CCL22 protein

Cat. No. CCL22-49H Lot. No. (See product label)

SPECIFICATION

Product Overview	Active Recombinant Human CCL22 protein(O00626)(25-93 aa) was expressed in E.coli.
Species	Human
Source	E.coli
ProteinLength	25-93 aa
Form	Lyophilized from a 0.2 µm filtered concentrated solution in 20 mM PB, pH7.4, 500 mM NaCl.
Bio-activity	Fully biologically active when compared to standard. The biological activity determined by a chemotaxis bioassay using human T-lymphocytes is in a concentration range of 10-100 ng/ml.
Molecular Mass	Approximately 8.1 kDa, a single, non-glycosylated polypeptide chain containing 69 amino acids.
AASequence	GPYGANMEDS VCCRDYVRYR LPLRVVKHFY WTSDSCPRPG VLLTFRDKE ICADPRVPWV KMILNKLSQ
Endotoxin	Less than 1 EU/µg of rHuMDC/CCL22 as determined by LAL method.
Purity	> 97 % by SDS-PAGE and HPLC analyses.

 Tel: 1-631-559-9269 1-516-512-3133

 Email: info@creative-biomart.com  Fax: 1-631-938-8127

 45-1 Ramsey Road, Shirley, NY 11967, USA

Storage

Use a manual defrost freezer and avoid repeated freeze-thaw cycles. - 12 months from date of receipt, -20 to -70 °C as supplied. - 1 month, 2 to 8 °C under sterile conditions after reconstitution. - 3 months, -20 to -70 °C under sterile conditions after reconstitution.

Reconstitution

We recommend that this vial be briefly centrifuged prior to opening to bring the contents to the bottom. Reconstitute in sterile distilled water or aqueous buffer containing 0.1 % BSA to a concentration of 0.1-1.0 mg/mL. Stock solutions should be apportioned into working aliquots and stored at ≤ -20 °C. Further dilutions should be made in appropriate buffered solutions.

GENE INFORMATION

Gene Name [CCL22 chemokine \(C-C motif\) ligand 22 \[Homo sapiens \]](#)

Official Symbol [CCL22](#)

Synonyms STCP-1; MDC (1-69); Macrophage-derived Chemokine

Gene ID [6367](#)

mRNA Refseq [NM_002990](#)

Protein Refseq [NP_002981](#)

MIM [602957](#)

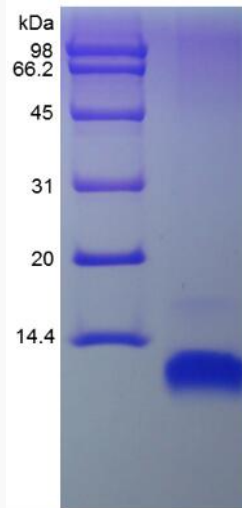
UniProt ID [O00626](#)

 Tel: 1-631-559-9269 1-516-512-3133

 Email: info@creative-biomart.com  Fax: 1-631-938-8127

 45-1 Ramsey Road, Shirley, NY 11967, USA

SDS-PAGE



 Tel: 1-631-559-9269 1-516-512-3133

 Email: info@creative-biomart.com  Fax: 1-631-938-8127

 45-1 Ramsey Road, Shirley, NY 11967, USA