

Recombinant Human CCL22 protein, GST-tagged

Cat. No. CCL22-5227H Lot. No. (See product label)

SPECIFICATION

Product Overview	Recombinant Human CCL22 protein(O00626)(25-82aa), fused to N-terminal GST tag, was expressed in E. coli.
Species	Human
Source	E.coli
ProteinLength	25-82aa
Form	If the delivery form is liquid, the default storage buffer is Tris/PBS-based buffer, 5%-50% glycerol. If the delivery form is lyophilized powder, the buffer before lyophilization is Tris/PBS-based buffer, 6% Trehalose, pH 8.0.
Molecular Mass	33.7 kDa
Purity	Greater than 90% as determined by SDS-PAGE.
Storage	Store at -20°C/-80°C upon receipt, aliquoting is necessary for mutiple use. Avoid repeated freeze-thaw cycles.
Reconstitution	Please reconstitute protein in deionized sterile water to a concentration of 0.1-1.0 mg/mL. We recommend to add 5-50% of glycerol (final concentration) and aliquot for long-term storage at -20°C/-80°C. Our default final concentration of glycerol is 50%.

 Tel: 1-631-559-9269 1-516-512-3133

 Email: info@creative-biomart.com  Fax: 1-631-938-8127

 45-1 Ramsey Road, Shirley, NY 11967, USA

GENE INFORMATION

Gene Name CCL22 chemokine (C-C motif) ligand 22 [Homo sapiens]

Official Symbol CCL22

Synonyms CCL22; chemokine (C-C motif) ligand 22; SCYA22, small inducible cytokine subfamily A (Cys Cys), member 22; C-C motif chemokine 22; A 152E5.1; ABCD 1; DC/B CK; MDC; MGC34554; STCP 1; MDC(1-69); CC chemokine STCP-1; macrophage-derived chemokine; small inducible cytokine A22; small-inducible cytokine A22; stimulated T cell chemotactic protein 1; stimulated T-cell chemotactic protein 1; small inducible cytokine subfamily A (Cys-Cys), member 22; ABCD-1; SCYA22; STCP-1; DC/B-CK; A-152E5.1;

Gene ID 6367

mRNA Refseq NM_002990

Protein Refseq NP_002981

MIM 602957

UniProt ID O00626

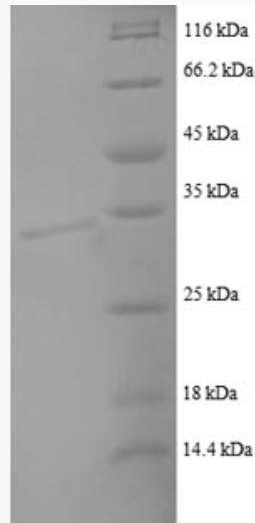
 Tel: 1-631-559-9269 1-516-512-3133

 Email: info@creative-biomart.com  Fax: 1-631-938-8127

 45-1 Ramsey Road, Shirley, NY 11967, USA



SDS-PAGE



Tel: 1-631-559-9269 1-516-512-3133

Email: info@creative-biomart.com Fax: 1-631-938-8127

45-1 Ramsey Road, Shirley, NY 11967, USA