

Recombinant Human CCL22 protein, His & GST-tagged

Cat. No. CCL22-702H Lot. No. (See product label)

SPECIFICATION

Product Overview	Recombinant Human CCL22 aa. (Gly25~Gln93 (Accession # O00626)) fused with N-terminal His & GST tag was produced in E. coli cells.
Species	Human
Source	E.coli
ProteinLength	Gly25~Gln93
Form	Freeze-dried powder
Molecular Mass	Predicted Molecular Mass: 40.5kDa
Endotoxin	<1.0EU per 1g (determined by the LAL method)
Purity	>95%
Characteristic	The isoelectric point is 7.2.
Applications	SDS-PAGE; WB; ELISA; IP.
Stability	The thermal stability is described by the loss rate. The loss rate was determined by accelerated thermal degradation test, that is, incubate the protein at 37°C for 48h, and no obvious degradation and precipitation were observed. The loss rate is less than 5% within the expiration date under appropriate storage condition.

 Tel: 1-631-559-9269 1-516-512-3133

 Email: info@creative-biomart.com  Fax: 1-631-938-8127

 45-1 Ramsey Road, Shirley, NY 11967, USA

Storage	Avoid repeated freeze/thaw cycles. Store at 2-8°C for one month. Aliquot and store at -80°C for 12 months.
Storage buffer	Supplied as lyophilized form in PBS, pH 7.4, containing 5% sucrose, 0.01% sarcosyl.
Reconstitution	Reconstitute in sterile PBS, pH7.2-pH7.4.

GENE INFORMATION

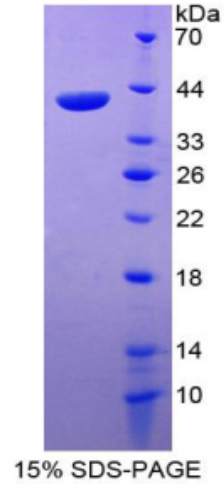
Gene Name	CCL22 C-C motif chemokine ligand 22 [Homo sapiens (human)]
Official Symbol	CCL22
Synonyms	MDC; ABCD-1; SCYA22; STCP-1; DC/B-CK; A-152E5.1; CC chemokine STCP-1; MDC(1-69); chemokine (C-C motif) ligand 22; macrophage-derived chemokine small inducible cytokine A22; small inducible cytokine subfamily A (Cys-Cys), member 22; stimulated T cell chemotactic protein 1
Gene ID	6367
mRNA Refseq	NM_002990.4
Protein Refseq	NP_002981.2
UniProt ID	O00626

 Tel: 1-631-559-9269 1-516-512-3133

 Email: info@creative-biomart.com  Fax: 1-631-938-8127

 45-1 Ramsey Road, Shirley, NY 11967, USA

SDS-PAGE



 Tel: 1-631-559-9269 1-516-512-3133

 Email: info@creative-biomart.com  Fax: 1-631-938-8127

 45-1 Ramsey Road, Shirley, NY 11967, USA