

## Active Recombinant Human CCL23 protein

Cat. No. CCL23-1284H Lot. No. (See product label)

### SPECIFICATION

<b>Product Overview</b>	Active Recombinant Human CCL23 protein(AAB51134.1) (Arg22-Asn120) was expressed in E. coli.
<b>Species</b>	Human
<b>Source</b>	E. coli
<b>ProteinLength</b>	22-120 aa
<b>Form</b>	Lyophilized from a 0.2 µm filtered concentrated solution in 20 mM PB, pH 7.4, 150 mM NaCl.
<b>Bio-activity</b>	Fully biologically active when compared to standard. The biological activity determined by a chemotaxis bioassay using human T-lymphocytes is in a concentration of 10-50 ng/ml.
<b>Molecular Mass</b>	Approximately 11.4 kDa, a single, non-glycosylated polypeptide chain containing 99 amino acids.
<b>AASequence</b>	RVTKDAETEF MMSKLPLENP VLLDRFHATS ADCCISYTPR SIPCSLLESY FETNSECSKP GVIFLTKKGR RFCANPSDKQ VQVCMRMLKL DTRIKTRKN
<b>Endotoxin</b>	Less than 1 EU/µg of rHuMIP-3/CCL23 as determined by LAL method.
<b>Purity</b>	> 97 % by SDS-PAGE and HPLC analyses.

 Tel: 1-631-559-9269 1-516-512-3133

 Email: [info@creative-biomart.com](mailto:info@creative-biomart.com)  Fax: 1-631-938-8127

 45-1 Ramsey Road, Shirley, NY 11967, USA

**Storage**

Use a manual defrost freezer and avoid repeated freeze-thaw cycles. - 12 months from date of receipt, -20 to -70 °C as supplied. - 1 month, 2 to 8 °C under sterile conditions after reconstitution. - 3 months, -20 to -70 °C under sterile conditions after reconstitution.

**Reconstitution**

We recommend that this vial be briefly centrifuged prior to opening to bring the contents to the bottom. Reconstitute in sterile distilled water or aqueous buffer containing 0.1 % BSA to a concentration of 0.1-1.0 mg/ml. Stock solutions should be apportioned into working aliquots and stored at ≤ -20°C.

## GENE INFORMATION

**Gene Name**

[CCL23 chemokine \(C-C motif\) ligand 23 \[ Homo sapiens \]](#)

**Official Symbol**

[CCL23](#)

**Synonyms**

CCL23; chemokine (C-C motif) ligand 23; SCYA23, small inducible cytokine subfamily A (Cys Cys), member 23; C-C motif chemokine 23; Ckb 8; CKb8; MIP 3; MPIF 1; hmrp-2a; C6 beta-chemokine; small-inducible cytokine A23; macrophage inflammatory protein 3; myeloid progenitor inhibitory factor 1; small inducible cytokine subfamily A (Cys-Cys), member 23; MIP3; Ckb-8; MIP-3; MPIF-1; SCYA23; Ckb-8-1; CK-BETA-8;

**Gene ID**

[6368](#)

**mRNA Refseq**

[NM\\_005064](#)

**Protein Refseq**

[NP\\_005055](#)

**MIM**

[602494](#)

 Tel: 1-631-559-9269 1-516-512-3133

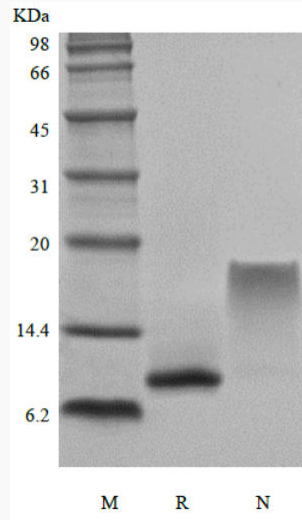
 Email: [info@creative-biomart.com](mailto:info@creative-biomart.com)  Fax: 1-631-938-8127

 45-1 Ramsey Road, Shirley, NY 11967, USA

UniProt ID

P55773

SDS-PAGE



 Tel: 1-631-559-9269 1-516-512-3133

 Email: [info@creative-biomart.com](mailto:info@creative-biomart.com)  Fax: 1-631-938-8127

 45-1 Ramsey Road, Shirley, NY 11967, USA