

Recombinant Human CCL23 protein

Cat. No. CCL23-199H **Lot. No.** (See product label)

SPECIFICATION

Product Overview	Recombinant Human CCL23 protein was expressed in Escherichia coli.
Species	Human
Source	E.coli
ProteinLength	99
Description	CCL23 is a member of CC chemokine family and is encoded by CCL23 gene located on Chr.17 in humans, where near several other CC chemokines. Highly expressed in adult lung, liver, skeletal muscle and pancreas, this protein shows strong chemotactic activity for monocytes, resting T-lymphocytes, and neutrophils, but not for activated lymphocytes. It elicits the effects by binding to CCR1. CCL23 is reported that it can be cleaved into four forms: CCL23 (19-99), CCL23 (22-99), CCL23 (27-99), CCL23 (30-99).
Form	Lyophilized from a 0.2µm filtered concentrated solution in 20 mM PB, pH 7.4, 150 mM NaCl.
Bio-activity	Fully biologically active when compared to standard. The biological activity determined by a chemotaxis bioassay using human T-lymphocytes is in a concentration of 10-50 ng/ml.
Molecular Mass	Approximately 11.4 kDa, a single, non-glycosylated polypeptide chain containing 99 amino acids.

 Tel: 1-631-559-9269 1-516-512-3133

 Email: info@creative-biomart.com  Fax: 1-631-938-8127

 45-1 Ramsey Road, Shirley, NY 11967, USA

AA Sequence	RVTKDAETEFMMSKLPLENPVLLDRFHATSADCCISYTPRSIPCSLLESYFETNSECS KPGVIFLTKKGRRFCANPSDKQVQVCMRMLKLDTRIKTRKN
Endotoxin	Less than 1 EU/μg of rHuMIP-3/CCL23 as determined by LAL method.
Purity	>97% by SDS-PAGE and HPLC analysis.
Storage	Use a manual defrost freezer and avoid repeated freeze-thaw cycles. 12 months from date of receipt, -20 to -70 centigrade as supplied. 1 month, 2 to 8 centigrade under sterile conditions after reconstitution. 3 months, -20 to -70 centigrade under sterile conditions after reconstitution.
Reconstitution	We recommend that this vial be briefly centrifuged prior to opening to bring the contents to the bottom. Reconstitute in sterile distilled water or aqueous buffer containing 0.1 % BSA to a concentration of 0.1-1.0 mg/mL. Stock solutions should be apportioned into working aliquots and stored at ≤-20 centigrade. Further dilutions should be made in appropriate buffered solutions.

GENE INFORMATION

Gene Name	CCL23
Official Symbol	CCL23
Synonyms	CCL23; chemokine (C-C motif) ligand 23; SCYA23, small inducible cytokine subfamily A (Cys Cys), member 23; C-C motif chemokine 23; Ckb 8; CKb8; MIP 3; MPIF 1; hmrp-2a; C6 beta-chemokine; small-inducible cytokine A23; macrophage inflammatory protein 3; myeloid progenitor inhibitory factor 1; small inducible cytokine subfamily A (Cys-Cys), member 23; MIP3; Ckb-8; MIP-3; MPIF-1; SCYA23; Ckb-8-1; CK-BETA-8;

 Tel: 1-631-559-9269 1-516-512-3133

 Email: info@creative-biomart.com  Fax: 1-631-938-8127

 45-1 Ramsey Road, Shirley, NY 11967, USA

Gene ID 6368

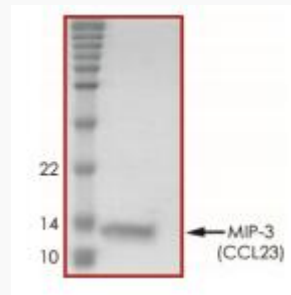
mRNA Refseq NM_005064

Protein Refseq NP_005055

MIM 602494

UniProt ID P55773

**SDS-PAGE of
CCL23-199H**



 Tel: 1-631-559-9269 1-516-512-3133

 Email: info@creative-biomart.com  Fax: 1-631-938-8127

 45-1 Ramsey Road, Shirley, NY 11967, USA