

Recombinant Human CCL23 protein, His-tagged

Cat. No. CCL23-238H Lot. No. (See product label)

SPECIFICATION

Product Overview	Recombinant Human CCL23 protein(P55773.3) (Arg46-Asn120) was expressed in Yeast with a polyhistidine tag at the C-terminus.
Species	Human
Source	Yeast
ProteinLength	46-120 aa
Form	Lyophilized from sterile PBS, pH 7.4.
Molecular Mass	The recombinant human CCL23 consists 85 amino acids and predicts a molecular mass of 9.9 kDa.
Purity	> 90 % as determined by SDS-PAGE
Storage	Store it under sterile conditions at -20°C to -80°C upon receiving. Recommend to aliquot the protein into smaller quantities for optimal storage. Avoid repeated freeze-thaw cycles.
Reconstitution	It is recommended that sterile water be added to the vial to prepare a stock solution of 0.2 ug/ul. Centrifuge the vial at 4°C before opening to recover the entire contents.

GENE INFORMATION

 Tel: 1-631-559-9269 1-516-512-3133

 Email: info@creative-biomart.com  Fax: 1-631-938-8127

 45-1 Ramsey Road, Shirley, NY 11967, USA

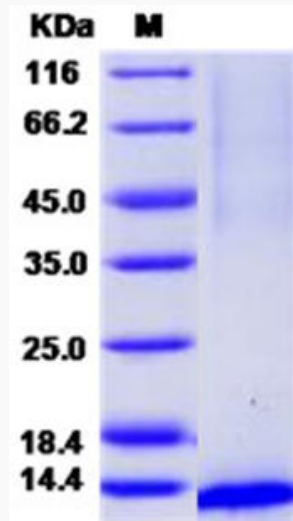
Gene Name	CCL23 chemokine (C-C motif) ligand 23 [Homo sapiens]
Official Symbol	CCL23
Synonyms	CCL23; chemokine (C-C motif) ligand 23; SCYA23, small inducible cytokine subfamily A (Cys Cys), member 23; C-C motif chemokine 23; Ckb 8; CKb8; MIP 3; MPIF 1; hmrp-2a; C6 beta-chemokine; small-inducible cytokine A23; macrophage inflammatory protein 3; myeloid progenitor inhibitory factor 1; small inducible cytokine subfamily A (Cys-Cys), member 23; MIP3; Ckb-8; MIP-3; MPIF-1; SCYA23; Ckb-8-1; CK-BETA-8;
Gene ID	6368
mRNA Refseq	NM_005064
Protein Refseq	NP_005055
MIM	602494
UniProt ID	P55773

 Tel: 1-631-559-9269 1-516-512-3133

 Email: info@creative-biomart.com  Fax: 1-631-938-8127

 45-1 Ramsey Road, Shirley, NY 11967, USA

SDS-PAGE



 Tel: 1-631-559-9269 1-516-512-3133

 Email: info@creative-biomart.com  Fax: 1-631-938-8127

 45-1 Ramsey Road, Shirley, NY 11967, USA