

# Recombinant Human CCL23 Protein, Myc/DDK-tagged, C13 and N15-labeled

**Cat. No.** CCL23-3630H    **Lot. No.** (See product label)

## SPECIFICATION

<b>Product Overview</b>	CCL23 MS Standard C13 and N15-labeled recombinant protein (NP_665905) with a C-terminal MYC/DDK tag, was expressed in HEK293 cells.
<b>Species</b>	Human
<b>Source</b>	HEK293
<b>Description</b>	<p>This gene is one of several chemokine genes clustered on the q-arm of chromosome 17. Chemokines form a superfamily of secreted proteins involved in immunoregulatory and inflammatory processes. The superfamily is divided into four subfamilies based on the arrangement of the N-terminal cysteine residues of the mature peptide. This chemokine, a member of the CC subfamily, displays chemotactic activity on resting T lymphocytes and monocytes, lower activity on neutrophils and no activity on activated T lymphocytes. The protein is also a strong suppressor of colony formation by a multipotential hematopoietic progenitor cell line. In addition, the product of this gene is a potent agonist of the chemokine (C-C motif) receptor 1. Alternative splicing results in multiple transcript variants that encode different isoforms.</p>
<b>Molecular Mass</b>	13.4 kDa
<b>AA Sequence</b>	MKVSVAALSCLMLVTALGSQARVTKDAETEFMMSKLPLENPVLLDRFHATSADCCIS YTPRSIPCSLLESYFETNSECSKPGVIFLTKKGRRFCANPSDKQVQVCMRMLKLDTR

 Tel: 1-631-559-9269    1-516-512-3133

 Email: [info@creative-biomart.com](mailto:info@creative-biomart.com)     Fax: 1-631-938-8127

 45-1 Ramsey Road, Shirley, NY 11967, USA

IKTRKNRTRRPLEQKLISEEDLAANDILDYKDDDDKV

**Purity** > 80% as determined by SDS-PAGE and Coomassie blue staining

**Stability** Stable for 3 months from receipt of products under proper storage and handling conditions.

**Storage** Store at -80 centigrade. Avoid repeated freeze-thaw cycles.

**Concentration** 50 µg/mL as determined by BCA

**Storage Buffer** 100 mM glycine, 25 mM Tris-HCl, pH 7.3.

## GENE INFORMATION

**Gene Name** [CCL23 C-C motif chemokine ligand 23 \[ Homo sapiens \(human\) \]](#)

**Official Symbol** [CCL23](#)

**Synonyms**

CCL23; chemokine (C-C motif) ligand 23; SCYA23, small inducible cytokine subfamily A (Cys Cys), member 23; C-C motif chemokine 23; Ckb 8; CKb8; MIP 3; MPIF 1; hmrp-2a; C6 beta-chemokine; small-inducible cytokine A23; macrophage inflammatory protein 3; myeloid progenitor inhibitory factor 1; small inducible cytokine subfamily A (Cys-Cys), member 23; MIP3; Ckb-8; MIP-3; MPIF-1; SCYA23; Ckb-8-1; CK-BETA-8;

**Gene ID** [6368](#)

**mRNA Refseq** [NM\\_145898](#)

**Protein Refseq** [NP\\_665905](#)

 Tel: 1-631-559-9269 1-516-512-3133

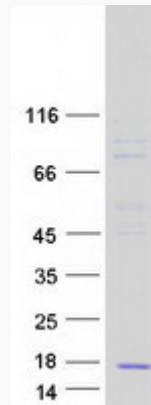
 Email: [info@creative-biomart.com](mailto:info@creative-biomart.com)  Fax: 1-631-938-8127

 45-1 Ramsey Road, Shirley, NY 11967, USA

**MIM** 602494

**UniProt ID** P55773

**SDS-PAGE**



 Tel: 1-631-559-9269 1-516-512-3133

 Email: [info@creative-biomart.com](mailto:info@creative-biomart.com)  Fax: 1-631-938-8127

 45-1 Ramsey Road, Shirley, NY 11967, USA