

Recombinant Human CCL23 protein, rFc-tagged

Cat. No. CCL23-3702H Lot. No. (See product label)

SPECIFICATION

Product Overview	Recombinant Human CCL23 protein(P55773-1)(Arg22-Asn120), fused with N-terminal rFc tag, was expressed in HEK293.
Species	Human
Source	HEK293
Form	Lyophilized from 0.22 µm filtered solution in PBS, pH 7.4. Normally 5% trehalose and 5% mannitol are added as protectants before lyophilization.
Molecular Mass	38.6 kDa
Endotoxin	<0.1 EU/µg protein, LAL method
Purity	>90 %, SDS-PAGE
Storage	It is recommended that the protein be aliquoted for optimal storage. Avoid repeated freeze-thaw cycles. Until expiry date, -20°C to -80°C as lyophilized proteins. 3 months, -20°C to -80°C under sterile conditions after reconstitution.
Reconstitution	Briefly centrifuge the tube before opening. Reconstitute at 0.1-0.5 mg/mL in sterile water.

GENE INFORMATION

 Tel: 1-631-559-9269 1-516-512-3133

 Email: info@creative-biomart.com  Fax: 1-631-938-8127

 45-1 Ramsey Road, Shirley, NY 11967, USA



Gene Name	CCL23 chemokine (C-C motif) ligand 23 [Homo sapiens]
Official Symbol	CCL23
Synonyms	CCL23; chemokine (C-C motif) ligand 23; SCYA23, small inducible cytokine subfamily A (Cys Cys), member 23; C-C motif chemokine 23; Ckb 8; CKb8; MIP 3; MPIF 1; hmrp-2a; C6 beta-chemokine; small-inducible cytokine A23; macrophage inflammatory protein 3; myeloid progenitor inhibitory factor 1; small inducible cytokine subfamily A (Cys-Cys), member 23; MIP3; Ckb-8; MIP-3; MPIF-1; SCYA23; Ckb-8-1; CK-BETA-8;
Gene ID	6368
mRNA Refseq	NM_005064
Protein Refseq	NP_005055
MIM	602494
UniProt ID	P55773

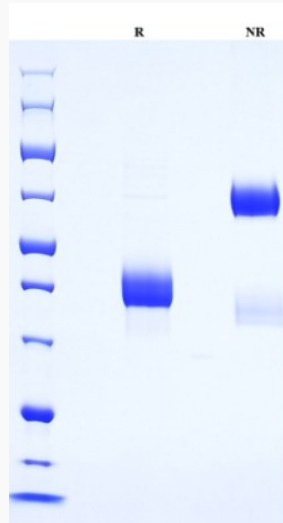
Tel: 1-631-559-9269 1-516-512-3133

Email: info@creative-biomart.com Fax: 1-631-938-8127

45-1 Ramsey Road, Shirley, NY 11967, USA



SDS-PAGE



Tel: 1-631-559-9269 1-516-512-3133

Email: info@creative-biomart.com Fax: 1-631-938-8127

45-1 Ramsey Road, Shirley, NY 11967, USA