

## Active Recombinant Human CCL24 Protein, hFc-tagged

**Cat. No.** CCL24-036H    **Lot. No.** (See product label)

### SPECIFICATION

<b>Product Overview</b>	Recombinant Human CCL24 Protein(O00175)(Val27-Cys119) is expressed from Expi293 with hFc tag at the N-terminal.
<b>Species</b>	Human
<b>Source</b>	HEK293
<b>ProteinLength</b>	Val27-Cys119
<b>Form</b>	Supplied as 0.22µm filtered solution in PBS (pH 7.4). Please dilute to the desired concentration according to the concentration of the solution shown on the product label.
<b>Bio-activity</b>	Immobilized Human CCL24, hFc Tag at 1µg/ml (100µl/Well) on the plate. Dose response curve for Biotinylated Anti-CCL24 Antibody, hFc Tag with the EC50 of 23.2ng/ml determined by ELISA.
<b>Molecular Mass</b>	The protein has a predicted MW of 36.5 kDa. Due to glycosylation, the protein migrates to 40-50 kDa based on Tris-Bis PAGE result.
<b>Endotoxin</b>	Less than 1EU per µg by the LAL method.
<b>Purity</b>	> 95% as determined by Tris-Bis PAGE
<b>Storage</b>	Valid for 12 months from date of receipt when stored at -80°C.

 Tel: 1-631-559-9269    1-516-512-3133

 Email: [info@creative-biomart.com](mailto:info@creative-biomart.com)     Fax: 1-631-938-8127

 45-1 Ramsey Road, Shirley, NY 11967, USA

Recommend to aliquot the protein into smaller quantities for optimal storage. Please do not repeated freeze-thaw cycles.

**Reconstitution**

It is recommended that sterile water be added to the vial to prepare a stock solution of 0.2 ug/ul. Centrifuge the vial at 4°C before opening to recover the entire contents.

## GENE INFORMATION

**Gene Name** [CCL24 chemokine \(C-C motif\) ligand 24 \[ Homo sapiens \]](#)

**Official Symbol** [CCL24](#)

**Synonyms**

CCL24; chemokine (C-C motif) ligand 24; SCYA24, small inducible cytokine subfamily A (Cys Cys), member 24; C-C motif chemokine 24; CK beta 6; Ckb 6; eotaxin 2; MPIF 2; MPIF2; myeloid progenitor inhibitory factor 2; CK-beta-6; eotaxin-2; small-inducible cytokine A24; eosinophil chemotactic protein 2; small inducible cytokine subfamily A (Cys-Cys), member 24; Ckb-6; MPIF-2; SCYA24

**Gene ID** [6369](#)

**mRNA Refseq** [NM\\_002991](#)

**Protein Refseq** [NP\\_002982](#)

**MIM** [602495](#)

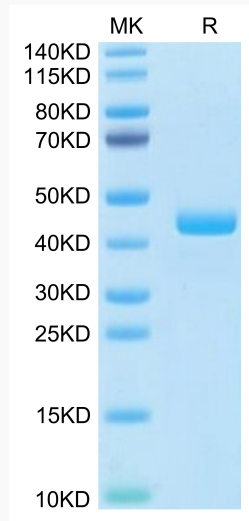
**UniProt ID** [O00175](#)

 Tel: 1-631-559-9269 1-516-512-3133

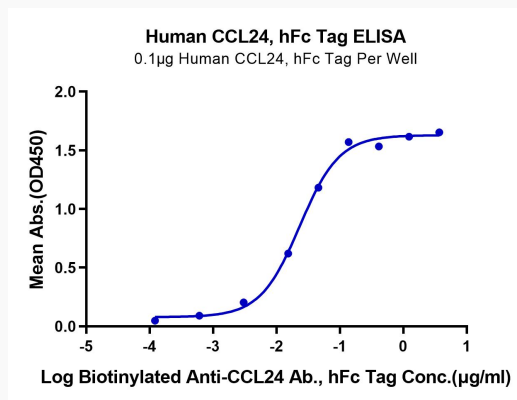
 Email: [info@creative-biomart.com](mailto:info@creative-biomart.com)  Fax: 1-631-938-8127

 45-1 Ramsey Road, Shirley, NY 11967, USA

**Tris-Bis PAGE**



**ELISA Data**



Tel: 1-631-559-9269 1-516-512-3133

Email: [info@creative-biomart.com](mailto:info@creative-biomart.com) Fax: 1-631-938-8127

45-1 Ramsey Road, Shirley, NY 11967, USA