

Active Recombinant Human CCL24 Protein, His-tagged

Cat. No. CCL24-151H **Lot. No.** (See product label)

SPECIFICATION

Product Overview	Recombinant Human CCL24 Protein(O00175)(Val27-Cys119) is expressed from Expi293 with His tag at the N-terminal.
Species	Human
Source	HEK293
ProteinLength	Val27-Cys119
Form	Supplied as 0.22µm filtered solution in PBS (pH 7.4). Please dilute to the desired concentration according to the concentration of the solution shown on the product label.
Bio-activity	Immobilized Human CCL24, His Tag at 1µg/ml (100µl/Well) on the plate. Dose response curve for Anti-CCL24 Antibody, hFc Tag with the EC50 of 28.5ng/ml determined by ELISA.
Molecular Mass	The protein has a predicted MW of 11.9 kDa. Due to glycosylation, the protein migrates to 20-25 kDa based on Tris-Bis PAGE result.
Endotoxin	Less than 1EU per µg by the LAL method.
Purity	> 95% as determined by Tris-Bis PAGE > 95% as determined by HPLC

 Tel: 1-631-559-9269 1-516-512-3133

 Email: info@creative-biomart.com  Fax: 1-631-938-8127

 45-1 Ramsey Road, Shirley, NY 11967, USA

Storage Valid for 12 months from date of receipt when stored at -80°C.
Recommend to aliquot the protein into smaller quantities for optimal storage. Please do not repeated freeze-thaw cycles.

Reconstitution It is recommended that sterile water be added to the vial to prepare a stock solution of 0.2 ug/ul. Centrifuge the vial at 4°C before opening to recover the entire contents.

GENE INFORMATION

Gene Name CCL24 chemokine (C-C motif) ligand 24 [Homo sapiens]

Official Symbol CCL24

Synonyms CCL24; chemokine (C-C motif) ligand 24; SCYA24, small inducible cytokine subfamily A (Cys Cys), member 24; C-C motif chemokine 24; CK beta 6; Ckb 6; eotaxin 2; MPIF 2; MPIF2; myeloid progenitor inhibitory factor 2; CK-beta-6; eotaxin-2; small-inducible cytokine A24; eosinophil chemotactic protein 2; small inducible cytokine subfamily A (Cys-Cys), member 24; Ckb-6; MPIF-2; SCYA24

Gene ID 6369

mRNA Refseq NM_002991

Protein Refseq NP_002982

MIM 602495

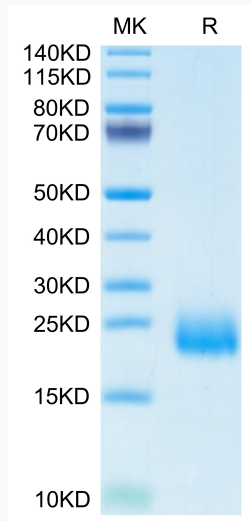
UniProt ID O00175

 Tel: 1-631-559-9269 1-516-512-3133

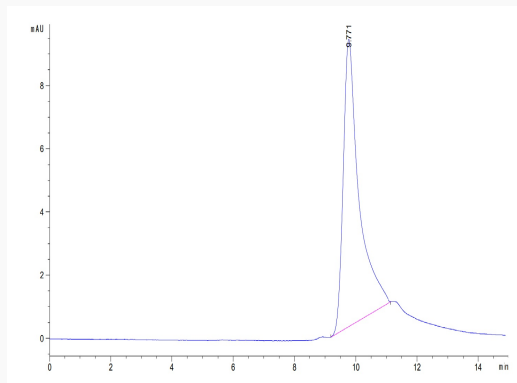
 Email: info@creative-biomart.com  Fax: 1-631-938-8127

 45-1 Ramsey Road, Shirley, NY 11967, USA

SDS-PAGE



SEC-HPLC

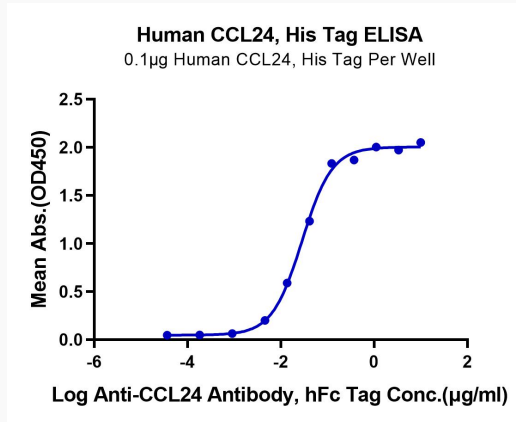


 Tel: 1-631-559-9269 1-516-512-3133

 Email: info@creative-biomart.com  Fax: 1-631-938-8127

 45-1 Ramsey Road, Shirley, NY 11967, USA

ELISA Data



 Tel: 1-631-559-9269 1-516-512-3133

 Email: info@creative-biomart.com  Fax: 1-631-938-8127

 45-1 Ramsey Road, Shirley, NY 11967, USA