

Recombinant Human CCL24 protein, His-tagged

Cat. No. CCL24-258H **Lot. No.** (See product label)

SPECIFICATION

Product Overview	Recombinant Human CCL24 protein(O00175) (Met 1-Cys 119) was expressed in Insect Cells, fused with a polyhistidine tag at the C-terminus.
Species	Human
Source	Insect Cells
ProteinLength	1-119 aa
Form	Lyophilized from sterile 20mM Tris, 500mM NaCl, pH 7.4, 10% gly.
Molecular Mass	The secreted recombinant human CCL24 consists of 103 amino acids and predicts a molecular mass of 11.8 kDa. It migrates as an approximately 19 KDa band in SDS-PAGE under reducing conditions.
Endotoxin	< 1.0 EU per µg of the protein as determined by the LAL method.
Purity	> 87 % as determined by SDS-PAGE
Storage	Store it under sterile conditions at -20°C to -80°C upon receiving. Recommend to aliquot the protein into smaller quantities for optimal storage. Avoid repeated freeze-thaw cycles.
Reconstitution	It is recommended that sterile water be added to the vial to prepare a stock solution of 0.2 ug/ul. Centrifuge the vial at 4°C before opening to recover the entire contents.

 Tel: 1-631-559-9269 1-516-512-3133

 Email: info@creative-biomart.com  Fax: 1-631-938-8127

 45-1 Ramsey Road, Shirley, NY 11967, USA

protein Refseq-Weblink	http://www.ncbi.nlm.nih.gov/protein/NP_002982.2
Unit ID	O00175
Unit ID-Weblink	http://www.uniprot.org/uniprot/O00175

GENE INFORMATION

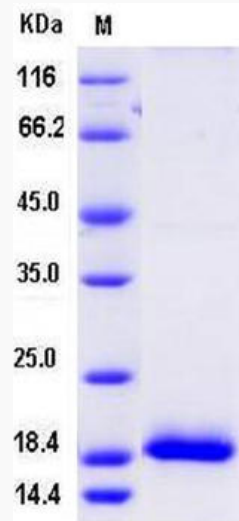
Gene Name	CCL24 chemokine (C-C motif) ligand 24 [Homo sapiens]
Official Symbol	CCL24
Synonyms	CCL24; chemokine (C-C motif) ligand 24; SCYA24, small inducible cytokine subfamily A (Cys Cys), member 24; C-C motif chemokine 24; CK beta 6; Ckb 6; eotaxin 2; MPIF 2; MPIF2; myeloid progenitor inhibitory factor 2; CK-beta-6; eotaxin-2; small-inducible cytokine A24; eosinophil chemotactic protein 2; small inducible cytokine subfamily A (Cys-Cys), member 24; Ckb-6; MPIF-2; SCYA24;
Gene ID	6369
mRNA Refseq	NM_002991
protein Refseq	NP_002982
MIM	602495

 Tel: 1-631-559-9269 1-516-512-3133

 Email: info@creative-biomart.com  Fax: 1-631-938-8127

 45-1 Ramsey Road, Shirley, NY 11967, USA

SDS-PAGE



 Tel: 1-631-559-9269 1-516-512-3133

 Email: info@creative-biomart.com  Fax: 1-631-938-8127

 45-1 Ramsey Road, Shirley, NY 11967, USA