

## Recombinant Human CCL25 Protein, GST-Tagged

**Cat. No.** CCL25-0630H    **Lot. No.** (See product label)

### SPECIFICATION

<b>Product Overview</b>	Human CCL25 partial ORF (NP_005615, 24 a.a. - 113 a.a.) recombinant protein with GST-tag at N-terminal.
<b>Species</b>	Human
<b>Source</b>	Wheat Germ
<b>Description</b>	<p>This antimicrobial gene belongs to the subfamily of small cytokine CC genes. Cytokines are a family of secreted proteins involved in immunoregulatory and inflammatory processes. The CC cytokines are proteins characterized by two adjacent cysteines. The cytokine encoded by this gene displays chemotactic activity for dendritic cells, thymocytes, and activated macrophages but is inactive on peripheral blood lymphocytes and neutrophils. The product of this gene binds to chemokine receptor CCR9. Alternative splicing results in multiple transcript variants. [provided by RefSeq, Sep 2014]</p>
<b>Molecular Mass</b>	35.64 kDa
<b>AA Sequence</b>	QGVFEDCCLAYHYPIGWAVLRRRAWTYRIQEVSGSCNLPAAIFYLPKRHRKVCGNPK SREVQRAMKLLDARNKVF AKLHHNTQTFQAGPHA
<b>Applications</b>	<p>Enzyme-linked Immunoabsorbent Assay            Western Blot (Recombinant protein)            Antibody Production            Protein Array</p>

 Tel: 1-631-559-9269    1-516-512-3133

 Email: [info@creative-biomart.com](mailto:info@creative-biomart.com)     Fax: 1-631-938-8127

 45-1 Ramsey Road, Shirley, NY 11967, USA

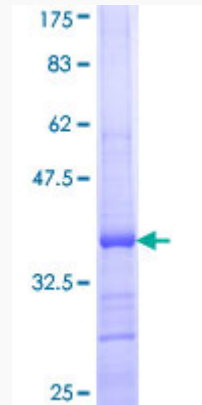
<b>Storage</b>	Store at -80 centigrade. Aliquot to avoid repeated freezing and thawing.
<b>Storage Buffer</b>	50 mM Tris-HCl, 10 mM reduced Glutathione, pH=8.0 in the elution buffer.
<b>GENE INFORMATION</b>	
<b>Gene Name</b>	CCL25 chemokine (C-C motif) ligand 25 [ Homo sapiens ]
<b>Official Symbol</b>	CCL25
<b>Synonyms</b>	CCL25; chemokine (C-C motif) ligand 25; SCYA25, small inducible cytokine subfamily A (Cys Cys), member 25; C-C motif chemokine 25; Ck beta 15; Ckb15; TECK; TECKvar; thymus expressed chemokine; Ck beta-15; chemokine TECK; thymus-expressed chemokine; small-inducible cytokine A25; small inducible cytokine subfamily A (Cys-Cys), member 25; SCYA25; MGC150327;
<b>Gene ID</b>	6370
<b>mRNA Refseq</b>	NM_001201359
<b>Protein Refseq</b>	NP_001188288
<b>MIM</b>	602565
<b>UniProt ID</b>	O15444

 Tel: 1-631-559-9269 1-516-512-3133

 Email: [info@creative-biomart.com](mailto:info@creative-biomart.com)  Fax: 1-631-938-8127

 45-1 Ramsey Road, Shirley, NY 11967, USA

**Quality Control  
Testing**



12.5% SDS-PAGE Stained with Coomassie Blue.

 Tel: 1-631-559-9269 1-516-512-3133

 Email: [info@creative-biomart.com](mailto:info@creative-biomart.com)  Fax: 1-631-938-8127

 45-1 Ramsey Road, Shirley, NY 11967, USA