

## Recombinant Human CCL25, His-tagged

Cat. No. CCL25-10846H Lot. No. (See product label)

### SPECIFICATION

<b>Product Overview</b>	Recombinant Human CCL25 protein(24-150aa), fused with N-terminal His tag, was expressed in E. coli.
<b>Species</b>	Human
<b>Source</b>	E.coli
<b>ProteinLength</b>	24-150aa
<b>Tag</b>	N-His
<b>Form</b>	Liquid in sterile PBS, pH7.4.
<b>Molecular Mass</b>	The protein has a calculated MW of 18 kDa.
<b>Endotoxin</b>	< 1.0EU per 1µg (determined by the LAL method).
<b>Purity</b>	> 90 % as determined by SDS-PAGE.
<b>Storage</b>	Store it under sterile conditions at -80°C. It is recommended that the protein be aliquoted for optimal storage. Avoid repeated freeze-thaw cycles.
<b>Concentration</b>	1.0 mg/ml.
<b>Reconstitution</b>	Centrifuge the vial at 4°C before opening to recover the entire contents.

 Tel: 1-631-559-9269 1-516-512-3133

 Email: [info@creative-biomart.com](mailto:info@creative-biomart.com)  Fax: 1-631-938-8127

 45-1 Ramsey Road, Shirley, NY 11967, USA

**AA Sequence**

MGSSHHHHHHHHSSGLVPRGSHMASMTGGQQMGRGSQGVFEDCCLAYHYPI  
 GWAVLRRRAWTYRIQEVSGSCNLPAAIFYLPKRHRKVCGNPKSREVQRAMKLLDARN  
 KVFAKLHHNTQTFQAGPHAVKKLSSGNSKLSSSKFSPNPISSSKRNVSLISANSGL

## GENE INFORMATION

**Gene Name**

CCL25 chemokine (C-C motif) ligand 25 [ Homo sapiens ]

**Official Symbol**

CCL25

**Synonyms**

CCL25; chemokine (C-C motif) ligand 25; SCYA25, small inducible cytokine subfamily A (Cys Cys), member 25; C-C motif chemokine 25; Ck beta 15; Ckb15; TECK; TECKvar; thymus expressed chemokine; Ck beta-15; chemokine TECK; thymus-expressed chemokine; small-inducible cytokine A25; small inducible cytokine subfamily A (Cys-Cys), member 25; SCYA25; MGC150327;

**Gene ID**

6370

**mRNA Refseq**

NM\_001201359

**Protein Refseq**

NP\_001188288

**MIM**

602565

**UniProt ID**

O15444

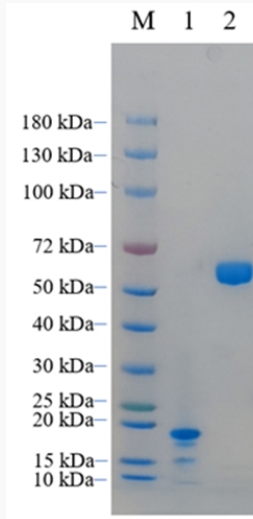
 Tel: 1-631-559-9269 1-516-512-3133

 Email: [info@creative-biomart.com](mailto:info@creative-biomart.com)  Fax: 1-631-938-8127

 45-1 Ramsey Road, Shirley, NY 11967, USA



SDS-PAGE



Tel: 1-631-559-9269 1-516-512-3133

Email: [info@creative-biomart.com](mailto:info@creative-biomart.com) Fax: 1-631-938-8127

45-1 Ramsey Road, Shirley, NY 11967, USA