

Recombinant Human CCL25 Protein (Lys27-Ser711), N-His tagged

Cat. No. CCL25-1477H Lot. No. (See product label)

SPECIFICATION

Product Overview	Recombinant Human CD283/TLR3 (Lys27-Ser711) fused with the N-His tag was expressed in E. coli.
Species	Human
Source	E.coli
ProteinLength	Lys27-Ser711
Form	Lyophilized powder/frozen liquid
Molecular Mass	80.23 kDa
Purity	>90% as determined by SDS-PAGE.
Notes	For research use only.
Storage	Use a manual defrost freezer and avoid repeated freeze thaw cycles. Store at 2 to 8 centigrade for one week. Store at -20 to -80 centigrade for twelve months from the date of receipt.
Storage Buffer	0.01M PBS, pH 7.4, 0.02% NLS
Reconstitution	Reconstitute in sterile water for a stock solution.

 Tel: 1-631-559-9269 1-516-512-3133

 Email: info@creative-biomart.com  Fax: 1-631-938-8127

 45-1 Ramsey Road, Shirley, NY 11967, USA

Shipping

They are shipped out with dry ice/blue ice unless customers require otherwise.

GENE INFORMATION
Gene Name

CCL25 chemokine (C-C motif) ligand 25 [Homo sapiens (human)]

Official Symbol

CCL25

Synonyms

CCL25; chemokine (C-C motif) ligand 25; SCYA25, small inducible cytokine subfamily A (Cys Cys), member 25; C-C motif chemokine 25; Ck beta 15; Ckb15; TECK; TECKvar; thymus expressed chemokine; Ck beta-15; chemokine TECK; thymus-expressed chemokine; small-inducible cytokine A25; small inducible cytokine subfamily A (Cys-Cys), member 25; SCYA25; MGC150327;

Gene ID

6370

mRNA Refseq

NM_001201359

Protein Refseq

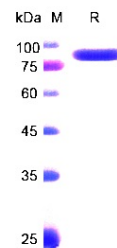
NP_001188288

MIM

602565

UniProt ID

O15444

SDS-PAGE


 Tel: 1-631-559-9269 1-516-512-3133

 Email: info@creative-biomart.com  Fax: 1-631-938-8127

 45-1 Ramsey Road, Shirley, NY 11967, USA