

Recombinant Human CCL25 protein

Cat. No. CCL25-31213TH Lot. No. (See product label)

SPECIFICATION

Product Overview	Recombinant Human CCL25 protein was expressed in Escherichia coli.
Species	Human
Source	E.coli
ProteinLength	128
Description	<p>CCL25 is new member of CC family chemokine. It is also called Thymus-expressed chemokine (TECK) because it is restricted produced by thymus and intestine. Especially, the dendritic cells derived from thymus but not bone marrow had identified to be the source of CCL25. By binding with CCR9, it elicits its effects of chemotactic for thymocytes, macrophages, and dendritic cells. Additionally, CCL25 takes part in regulating the development of T-cells.</p>
Form	Lyophilized from a 0.2µm filtered concentrated solution in 20 mM PB, pH 7.4, 150 mM NaCl.
Bio-activity	Fully biologically active when compared to standard. The biological activity determined by a chemotaxis bioassay using human monocytes is in a concentration range of 1.0-10 ng/ml.
Molecular Mass	Approximately 14.3 kDa, a single, non-glycosylated polypeptide chain containing 128 amino acids.

 Tel: 1-631-559-9269 1-516-512-3133

 Email: info@creative-biomart.com  Fax: 1-631-938-8127

 45-1 Ramsey Road, Shirley, NY 11967, USA

AA Sequence	MQGVFEDCCLAYHYPIGWAVLRRRAWTYRIQEVSGSCNLPAAIIFYLPKRHRKVCGNP KSREVQRAMKLLDARNKVFAKLHHNTQTFQAGPHAVKKLSSGNSKLSSSKFSNPIS SSKRNVSLLISANGL
Endotoxin	Less than 1 EU/g of rHuTECK/CCL25 as determined by LAL method.
Purity	>97% by SDS-PAGE and HPLC analysis.
Storage	Use a manual defrost freezer and avoid repeated freeze-thaw cycles. 12 months from date of receipt, -20 to -70 centigrade as supplied. 1 month, 2 to 8 centigrade under sterile conditions after reconstitution. 3 months, -20 to -70 centigrade under sterile conditions after reconstitution.
Reconstitution	We recommend that this vial be briefly centrifuged prior to opening to bring the contents to the bottom. Reconstitute in sterile distilled water or aqueous buffer containing 0.1 % BSA to a concentration of 0.1-1.0 mg/mL. Stock solutions should be apportioned into working aliquots and stored at ≤-20 centigrade. Further dilutions should be made in appropriate buffered solutions.

GENE INFORMATION

Gene Name	CCL25
Official Symbol	CCL25
Synonyms	CCL25; chemokine (C-C motif) ligand 25; SCYA25, small inducible cytokine subfamily A (Cys Cys), member 25; C-C motif chemokine 25; Ck beta 15; Ckb15; TECK; TECKvar; thymus expressed chemokine; Ck beta-15; chemokine TECK; thymus-expressed chemokine; small-inducible cytokine A25; small inducible cytokine subfamily A (Cys-Cys), member 25; SCYA25; MGC150327;

 Tel: 1-631-559-9269 1-516-512-3133

 Email: info@creative-biomart.com  Fax: 1-631-938-8127

 45-1 Ramsey Road, Shirley, NY 11967, USA

Gene ID 6370

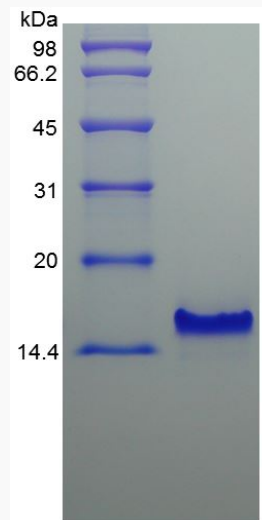
mRNA Refseq NM_001201359

Protein Refseq NP_001188288

MIM 602565

UniProt ID O15444

SDS-PAGE of
CCL25-31213TH



Tel: 1-631-559-9269 1-516-512-3133

Email: info@creative-biomart.com Fax: 1-631-938-8127

45-1 Ramsey Road, Shirley, NY 11967, USA