

Recombinant Human CCL26 Protein, His/GST-tagged

Cat. No. CCL26-244H **Lot. No.** (See product label)

SPECIFICATION

Product Overview	Recombinant Human CCL26(Thr24~Leu94) fused with His/GST tag at N-terminal was expressed in E. coli.
Species	Human
Source	E.coli
ProteinLength	Thr24~Leu94
Description	This gene is one of two Cys-Cys (CC) cytokine genes clustered on the q arm of chromosome 7. Cytokines are a family of secreted proteins involved in immunoregulatory and inflammatory processes. The CC cytokines are proteins characterized by two adjacent cysteines. The cytokine encoded by this gene displays chemotactic activity for normal peripheral blood eosinophils and basophils. The product of this gene is one of three related chemokines that specifically activate chemokine receptor CCR3. This chemokine may contribute to the eosinophil accumulation in atopic diseases.
Form	PBS, pH7.4, containing 0.01% SKL, 1mM DTT, 5% Trehalose and Proclin300.
Molecular Mass	38.39kDa
Endotoxin	<1.0EU per 1ug (determined by the LAL method)
Purity	> 95%

 Tel: 1-631-559-9269 1-516-512-3133

 Email: info@creative-biomart.com  Fax: 1-631-938-8127

 45-1 Ramsey Road, Shirley, NY 11967, USA

Applications	Positive Control; Immunogen; SDS-PAGE; WB. If bio-activity of the protein is needed, please check active protein
Stability	The thermal stability is described by the loss rate. The loss rate was determined by accelerated thermal degradation test, that is, incubate the protein at 37 centigrade for 48h, and no obvious degradation and precipitation were observed. The loss rate is less than 5% within the expiration date under appropriate storage condition.
Storage	Avoid repeated freeze/thaw cycles. Store at 2-8 centigrade for one month. Aliquot and store at -80 centigrade for 12 months.
Reconstitution	Reconstitute in PBS or others
GENE INFORMATION	
Gene Name	CCL26 chemokine (C-C motif) ligand 26 [Homo sapiens]
Official Symbol	CCL26
Synonyms	CCL26; chemokine (C-C motif) ligand 26; SCYA26, small inducible cytokine subfamily A (Cys Cys), member 26; C-C motif chemokine 26; CC chemokine IMAC; chemokine N1; eotaxin 3; IMAC; macrophage inflammatory protein 4 alpha; MIP 4a; MIP 4alpha; small inducible cytokine A26; thymic stroma chemokine 1; TSC 1; eotaxin-3; MIP-4-alpha; thymic stroma chemokine-1; small-inducible cytokine A26; macrophage inflammatory protein 4-alpha; small inducible cytokine subfamily A (Cys-Cys), member 26; TSC-1; MIP-4a; SCYA26; MIP-4alpha; MGC126714;
Gene ID	10344
mRNA Refseq	NM_006072

 Tel: 1-631-559-9269 1-516-512-3133

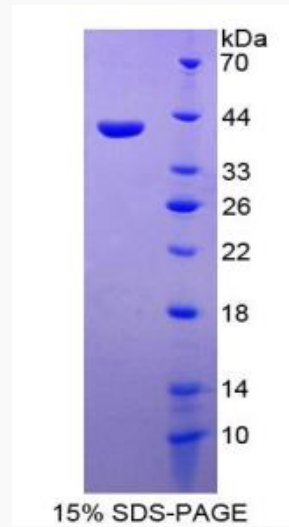
 Email: info@creative-biomart.com  Fax: 1-631-938-8127

 45-1 Ramsey Road, Shirley, NY 11967, USA

Protein Refseq NP_006063

MIM 604697

UniProt ID Q9Y258



 Tel: 1-631-559-9269 1-516-512-3133

 Email: info@creative-biomart.com  Fax: 1-631-938-8127

 45-1 Ramsey Road, Shirley, NY 11967, USA