

Recombinant Human CCL26 protein

Cat. No. CCL26-608H **Lot. No.** (See product label)

SPECIFICATION

Product Overview	Recombinant Human CCL26 protein was expressed in Escherichia coli.
Species	Human
Source	E.coli
ProteinLength	71
Description	CCL26 is novel CC family chemokine, also known as TARC (thymus and activation regulated chemokine). It is encoded by CCL26 gene, which is located on Chr.7 in humans, and ubiquitously expressed at low levels in various tissues including heart and ovary. CCL26 elicits its effects activity by binding to the cell surface chemokine receptor CCR3, and chemotactic for eosinophils and basophils.
Form	Lyophilized from a 0.2µm filtered concentrated solution in PBS, pH 7.4.
Bio-activity	Fully biologically active when compared to standard. The biological activity determined by a chemotaxis bioassay using human CCR3 transfected HEK293 cells is in a concentration range of 0.5-2.0 µg/ml.
Molecular Mass	Approximately 8.4 kDa, a single non-glycosylated polypeptide chain containing 71 amino acid residues.
AA Sequence	TRGSDISKTCFCFYSHKPLPWTWVRSYEFTSNSCSQRAVIFTTKRGKKVCTHPRKK WVQKYISLLKTPKQL

 Tel: 1-631-559-9269 1-516-512-3133

 Email: info@creative-biomart.com  Fax: 1-631-938-8127

 45-1 Ramsey Road, Shirley, NY 11967, USA

Endotoxin	Less than 1 EU/μg of rHuEotaxin-3/CCL26 as determined by LAL method.
Purity	>97% by SDS-PAGE and HPLC analysis.
Storage	Use a manual defrost freezer and avoid repeated freeze-thaw cycles. 12 months from date of receipt, -20 to -70 centigrade as supplied. 1 month, 2 to 8 centigrade under sterile conditions after reconstitution. 3 months, -20 to -70 centigrade under sterile conditions after reconstitution.
Reconstitution	We recommend that this vial be briefly centrifuged prior to opening to bring the contents to the bottom. Reconstitute in sterile distilled water or aqueous buffer containing 0.1 % BSA to a concentration of 0.1-1.0 mg/mL. Stock solutions should be apportioned into working aliquots and stored at ≤-20 centigrade. Further dilutions should be made in appropriate buffered solutions.
GENE INFORMATION	
Gene Name	CCL26
Official Symbol	CCL26
Synonyms	CCL26; chemokine (C-C motif) ligand 26; SCYA26, small inducible cytokine subfamily A (Cys Cys), member 26; C-C motif chemokine 26; CC chemokine IMAC; chemokine N1; eotaxin 3; IMAC; macrophage inflammatory protein 4 alpha; MIP 4a; MIP 4alpha; small inducible cytokine A26; thymic stroma chemokine 1; TSC 1; eotaxin-3; MIP-4-alpha; thymic stroma chemokine-1; small-inducible cytokine A26; macrophage inflammatory protein 4-alpha; small inducible cytokine subfamily A (Cys-Cys), member 26; TSC-1; MIP-4a; SCYA26; MIP-4alpha; MGC126714;
Gene ID	10344

 Tel: 1-631-559-9269 1-516-512-3133

 Email: info@creative-biomart.com  Fax: 1-631-938-8127

 45-1 Ramsey Road, Shirley, NY 11967, USA

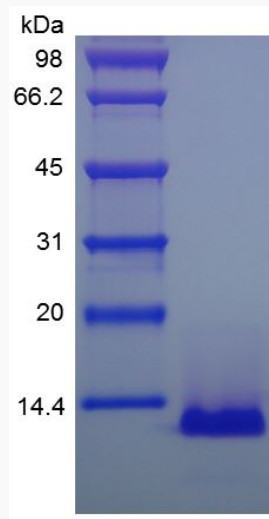
mRNA Refseq [NM_006072](#)

Protein Refseq [NP_006063](#)

MIM [604697](#)

UniProt ID [Q9Y258](#)

SDS-PAGE of
CCL26-608H



 Tel: 1-631-559-9269 1-516-512-3133

 Email: info@creative-biomart.com  Fax: 1-631-938-8127

 45-1 Ramsey Road, Shirley, NY 11967, USA