

Recombinant Human CCL27 Protein, GST-Tagged

Cat. No. CCL27-0633H **Lot. No.** (See product label)

SPECIFICATION

Product Overview	Human CCL27 full-length ORF (NP_006655, 1 a.a. - 112 a.a.) recombinant protein with GST-tag at N-terminal.
Species	Human
Source	Wheat Germ
Description	<p>This gene is one of several CC cytokine genes clustered on the p-arm of chromosome 9. Cytokines are a family of secreted proteins involved in immunoregulatory and inflammatory processes. The CC cytokines are proteins characterized by two adjacent cysteines. The protein encoded by this gene is chemotactic for skin-associated memory T lymphocytes. This cytokine may also play a role in mediating homing of lymphocytes to cutaneous sites. It specifically binds to chemokine receptor 10 (CCR10). Studies of a similar murine protein indicate that these protein-receptor interactions have a pivotal role in T cell-mediated skin inflammation. [provided by RefSeq, Sep 2014]</p>
Molecular Mass	37.95 kDa
AA Sequence	MKGPPTFCLLLLLLSPDPTAAFLPPSTACCTQLYRKPLSDKLLRKVIQVELQEA DGDCHLQAFVLHLAQRSICIHQPQNPSLSQWFEHQERKLHGTLPKLNFGMLRKMG
Applications	<p>Enzyme-linked Immunoabsorbent Assay</p> <p>Western Blot (Recombinant protein)</p> <p>Antibody Production</p>

 Tel: 1-631-559-9269 1-516-512-3133

 Email: info@creative-biomart.com  Fax: 1-631-938-8127

 45-1 Ramsey Road, Shirley, NY 11967, USA

Protein Array

Storage Store at -80 centigrade. Aliquot to avoid repeated freezing and thawing.

Storage Buffer 50 mM Tris-HCl, 10 mM reduced Glutathione, pH=8.0 in the elution buffer.

GENE INFORMATION

Gene Name [CCL27 chemokine \(C-C motif\) ligand 27 \[Homo sapiens \]](#)

Official Symbol [CCL27](#)

Synonyms

CCL27; chemokine (C-C motif) ligand 27; SCYA27, small inducible cytokine subfamily A (Cys Cys), member 27; C-C motif chemokine 27; ALP; CC chemokine ILC; CTACK; CTAK; cutaneous T cell attracting chemokine; ESKine; IL 11 Ralpha locus chemokine; ILC; PESKY; skinkine; IL-11 Ralpha-locus chemokine; small-inducible cytokine A27; IL-11 R-alpha-locus chemokine; cutaneous T-cell attracting chemokine; cutaneous T-cell-attracting chemokine; small inducible cytokine subfamily A (Cys-Cys), member 27; ESKINE; SCYA27;

Gene ID [10850](#)

mRNA Refseq [NM_006664](#)

Protein Refseq [NP_006655](#)

MIM [604833](#)

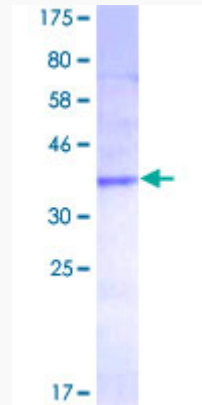
UniProt ID [Q9Y4X3](#)

 Tel: 1-631-559-9269 1-516-512-3133

 Email: info@creative-biomart.com  Fax: 1-631-938-8127

 45-1 Ramsey Road, Shirley, NY 11967, USA

**Quality Control
Testing**



12.5% SDS-PAGE Stained with Coomassie Blue.

 Tel: 1-631-559-9269 1-516-512-3133

 Email: info@creative-biomart.com  Fax: 1-631-938-8127

 45-1 Ramsey Road, Shirley, NY 11967, USA