

Recombinant Human CCL27 protein, rFc-tagged

Cat. No. CCL27-3703H Lot. No. (See product label)

SPECIFICATION

Product Overview	Recombinant Human CCL27 protein(Q9Y4X3)(Phe25-Gly112), fused with N-terminal rFc tag, was expressed in HEK293.
Species	Human
Source	HEK293
Form	Lyophilized from 0.22 µm filtered solution in PBS, pH 7.4. Normally 5% trehalose and 5% mannitol are added as protectants before lyophilization.
Molecular Mass	37.3 kDa
Endotoxin	<0.1 EU/µg protein, LAL method
Purity	>90 %, SDS-PAGE
Storage	It is recommended that the protein be aliquoted for optimal storage. Avoid repeated freeze-thaw cycles. Until expiry date, -20°C to -80°C as lyophilized proteins. 3 months, -20°C to -80°C under sterile conditions after reconstitution.
Reconstitution	Briefly centrifuge the tube before opening. Reconstitute at 0.1-0.5 mg/mL in sterile water.

GENE INFORMATION

 Tel: 1-631-559-9269 1-516-512-3133

 Email: info@creative-biomart.com  Fax: 1-631-938-8127

 45-1 Ramsey Road, Shirley, NY 11967, USA

Gene Name	CCL27 chemokine (C-C motif) ligand 27 [Homo sapiens]
Official Symbol	CCL27
Synonyms	CCL27; chemokine (C-C motif) ligand 27; SCYA27, small inducible cytokine subfamily A (Cys Cys), member 27; C-C motif chemokine 27; ALP; CC chemokine ILC; CTACK; CTAK; cutaneous T cell attracting chemokine; ESKine; IL 11 Ralpha locus chemokine; ILC; PESKY; skinkine; IL-11 Ralpha-locus chemokine; small-inducible cytokine A27; IL-11 R-alpha-locus chemokine; cutaneous T-cell attracting chemokine; cutaneous T-cell-attracting chemokine; small inducible cytokine subfamily A (Cys-Cys), member 27; ESKINE; SCYA27;
Gene ID	10850
mRNA Refseq	NM_006664
Protein Refseq	NP_006655
MIM	604833
UniProt ID	Q9Y4X3

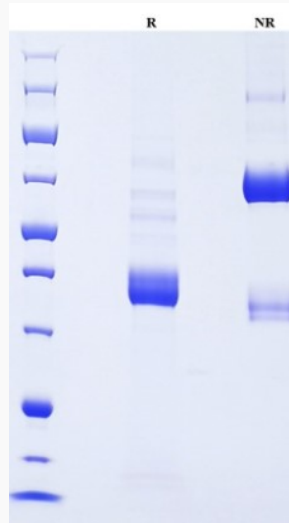
 Tel: 1-631-559-9269 1-516-512-3133

 Email: info@creative-biomart.com  Fax: 1-631-938-8127

 45-1 Ramsey Road, Shirley, NY 11967, USA



SDS-PAGE



Tel: 1-631-559-9269 1-516-512-3133

Email: info@creative-biomart.com Fax: 1-631-938-8127

45-1 Ramsey Road, Shirley, NY 11967, USA