

## Recombinant Human CCL28 Protein (Ile20-Tyr127)

Cat. No. CCL28-1407H Lot. No. (See product label)

### SPECIFICATION

<b>Product Overview</b>	Recombinant human CCL28 (Ile20-Tyr127) fused without tag was expressed in E. coli.
<b>Species</b>	Human
<b>Source</b>	E.coli
<b>ProteinLength</b>	Ile20-Tyr127
<b>Form</b>	Lyophilized powder/frozen liquid
<b>Molecular Mass</b>	11.88 kDa
<b>Purity</b>	>90% as determined by SDS-PAGE.
<b>Notes</b>	For research use only.
<b>Storage</b>	Use a manual defrost freezer and avoid repeated freeze thaw cycles. Store at 2 to 8 centigrade for one week. Store at -20 to -80 centigrade for twelve months from the date of receipt.
<b>Storage Buffer</b>	Supplied as solution form in PBS or lyophilized from PBS.
<b>Reconstitution</b>	Reconstitute in sterile water for a stock solution.

 Tel: 1-631-559-9269 1-516-512-3133

 Email: [info@creative-biomart.com](mailto:info@creative-biomart.com)  Fax: 1-631-938-8127

 45-1 Ramsey Road, Shirley, NY 11967, USA

**Shipping** They are shipped out with dry ice/blue ice unless customers require otherwise.

## GENE INFORMATION

**Gene Name** CCL28 chemokine (C-C motif) ligand 28 [ Homo sapiens (human) ]

**Official Symbol** CCL28

**Synonyms** CCL28; chemokine (C-C motif) ligand 28; C-C motif chemokine 28; CC chemokine CCL28; CCK1; MEC; mucosae associated epithelial chemokine; SCYA28; small inducible cytokine A28; small inducible cytokine subfamily A (Cys Cys); member 28; small-inducible cytokine A28; mucosae-associated epithelial chemokine; chemokine (C-C motif) ligand 28 splice variant chi; small inducible cytokine subfamily A (Cys-Cys), member 28; MGC71902;

**Gene ID** 56477

**mRNA Refseq** NM\_148672

**Protein Refseq** NP\_683513

**MIM** 605240

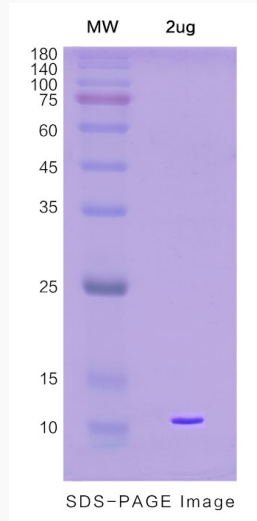
**UniProt ID** Q9NRJ3

 Tel: 1-631-559-9269 1-516-512-3133

 Email: [info@creative-biomart.com](mailto:info@creative-biomart.com)  Fax: 1-631-938-8127

 45-1 Ramsey Road, Shirley, NY 11967, USA

**SDS-PAGE**



 Tel: 1-631-559-9269 1-516-512-3133

 Email: [info@creative-biomart.com](mailto:info@creative-biomart.com)  Fax: 1-631-938-8127

 45-1 Ramsey Road, Shirley, NY 11967, USA