

## Recombinant Human CCL28 Protein, His-tagged

**Cat. No.** CCL28-193H    **Lot. No.** (See product label)

### SPECIFICATION

<b>Product Overview</b>	Recombinant Human CCL28 Protein(NP_683513.1) (Ile23-Tyr127) was expressed in E. coli with a polyhistidine tag at the N-terminus.
<b>Species</b>	Human
<b>Source</b>	E. coli
<b>ProteinLength</b>	23-127 aa
<b>Form</b>	Lyophilized from sterile PBS, pH 7.4.
<b>Molecular Mass</b>	The recombinant human CCL28 consists of 121 amino acids and predicts a molecular mass of 14.2 KDa. It migrates as an approximately 19 KDa band in SDS-PAGE under reducing conditions.
<b>Purity</b>	> 95 % by SDS-PAGE and HPLC analyses.
<b>Storage</b>	Use a manual defrost freezer and avoid repeated freeze-thaw cycles. - 12 months from date of receipt, -20 to -70 °C as supplied. - 1 month, 2 to 8 °C under sterile conditions after reconstitution. - 3 months, -20 to -70 °C under sterile conditions after reconstitution.
<b>Reconstitution</b>	We recommend that this vial be briefly centrifuged prior to opening to bring the contents to the bottom. Reconstitute in sterile distilled water or aqueous buffer containing 0.1 % BSA to a concentration of 0.1-1.0 mg/ml. Stock solutions should be

 Tel: 1-631-559-9269    1-516-512-3133

 Email: [info@creative-biomart.com](mailto:info@creative-biomart.com)     Fax: 1-631-938-8127

 45-1 Ramsey Road, Shirley, NY 11967, USA

apportioned into working aliquots and stored at  $\leq -20^{\circ}\text{C}$ .

## GENE INFORMATION

**Gene Name** CCL28 chemokine (C-C motif) ligand 28 [ Homo sapiens ]

**Official Symbol** CCL28

**Synonyms** CCL28; chemokine (C-C motif) ligand 28; C-C motif chemokine 28; CC chemokine CCL28; CCK1; MEC; mucosae associated epithelial chemokine; SCYA28; small inducible cytokine A28; small inducible cytokine subfamily A (Cys Cys); member 28; small-inducible cytokine A28; mucosae-associated epithelial chemokine; chemokine (C-C motif) ligand 28 splice variant chi; small inducible cytokine subfamily A (Cys-Cys), member 28; MGC71902;

**Gene ID** 56477

**mRNA Refseq** NM\_148672

**Protein Refseq** NP\_683513

**MIM** 605240

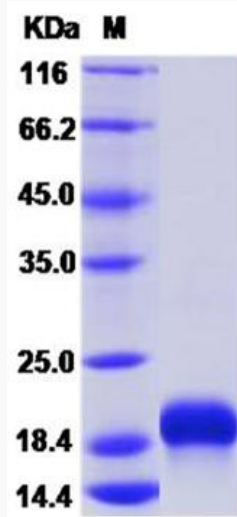
**UniProt ID** Q9NRJ3

 Tel: 1-631-559-9269 1-516-512-3133

 Email: [info@creative-biomart.com](mailto:info@creative-biomart.com)  Fax: 1-631-938-8127

 45-1 Ramsey Road, Shirley, NY 11967, USA

SDS-PAGE



 Tel: 1-631-559-9269 1-516-512-3133

 Email: [info@creative-biomart.com](mailto:info@creative-biomart.com)  Fax: 1-631-938-8127

 45-1 Ramsey Road, Shirley, NY 11967, USA