

Recombinant Human CCL28 protein

Cat. No. CCL28-69H **Lot. No.** (See product label)

SPECIFICATION

Product Overview	Recombinant Human CCL28 protein was expressed in Escherichia coli.
Species	Human
Source	E.coli
ProteinLength	108
Description	CCL28 belongs to CC family chemokine, also named mucosae-associated epithelial chemokine (MEC). The CCL28 cDNA is located on Chr.5 in humans, and the mRNA of CCL28 is highly expressed by epithelial cells of diverse tissues including normal and pathological colon, salivary gland, mammary gland, trachea and rectum. The amino acids sequence of human and mouse CCL28 shares 83 % identity, when the protein is processed to be the mature form. CCL28 is signaling through CCR3 and CCR10, and chemotactic for resting CD4, CD8 T-cells and eosinophils.
Form	Lyophilized from a 0.2µm filtered concentrated solution in 20 mM PB, pH 7.4, 130 mM NaCl.
Bio-activity	Fully biologically active when compared to standard. The biological activity determined by a chemotaxis bioassay using human lymphocytes is in a concentration range of 1.0-10.0 ng/ml.
Molecular Mass	Approximately 12.4 kDa, a single non-glycosylated polypeptide chain containing 108 amino acids.

 Tel: 1-631-559-9269 1-516-512-3133

 Email: info@creative-biomart.com  Fax: 1-631-938-8127

 45-1 Ramsey Road, Shirley, NY 11967, USA

AA Sequence	SEAILPIASSCCTEVSHHISRLLERVNMCRIQRADGDCDLAAVILHVKRRRICVSPHN HTVKQWMKVQAAKKNKGKGNVCHRKKHHGKRNSNRAHQGKHETYGHKTPY
Endotoxin	Less than 1 EU/μg of rHuMEC/CCL28 as determined by LAL method.
Purity	>97% by SDS-PAGE and HPLC analysis.
Storage	Use a manual defrost freezer and avoid repeated freeze-thaw cycles. 12 months from date of receipt, -20 to -70 centigrade as supplied. 1 month, 2 to 8 centigrade under sterile conditions after reconstitution. 3 months, -20 to -70 centigrade under sterile conditions after reconstitution.
Reconstitution	We recommend that this vial be briefly centrifuged prior to opening to bring the contents to the bottom. Reconstitute in sterile distilled water or aqueous buffer containing 0.1 % BSA to a concentration of 0.1-1.0 mg/mL. Stock solutions should be apportioned into working aliquots and stored at ≤-20 centigrade. Further dilutions should be made in appropriate buffered solutions.

GENE INFORMATION

Gene Name	CCL28
Official Symbol	CCL28
Synonyms	CCL28; chemokine (C-C motif) ligand 28; C-C motif chemokine 28; CC chemokine CCL28; CCK1; MEC; mucosae associated epithelial chemokine; SCYA28; small inducible cytokine A28; small inducible cytokine subfamily A (Cys Cys); member 28; small-inducible cytokine A28; mucosae-associated epithelial chemokine; chemokine (C-C motif) ligand 28 splice variant chi; small inducible cytokine subfamily A (Cys-Cys), member 28; MGC71902;

 Tel: 1-631-559-9269 1-516-512-3133

 Email: info@creative-biomart.com  Fax: 1-631-938-8127

 45-1 Ramsey Road, Shirley, NY 11967, USA

Gene ID 56477

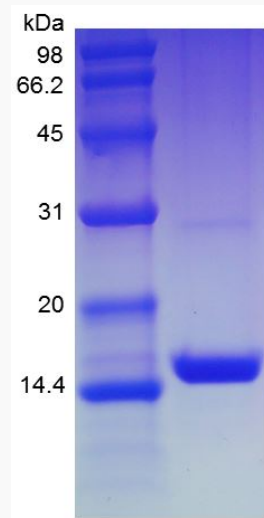
mRNA Refseq NM_148672

Protein Refseq NP_683513

MIM 605240

UniProt ID Q9NRJ3

SDS-PAGE of
CCL28-69H



Tel: 1-631-559-9269 1-516-512-3133

Email: info@creative-biomart.com Fax: 1-631-938-8127

45-1 Ramsey Road, Shirley, NY 11967, USA