

Recombinant Human CCL3 Protein, GST-Tagged

Cat. No. CCL3-0637H Lot. No. (See product label)

SPECIFICATION

| | |
|-------------------------|---|
| Product Overview | Human CCL3 full-length ORF (NP_002974.1, 1 a.a. - 92 a.a.) recombinant protein with GST-tag at N-terminal. |
| Species | Human |
| Source | Wheat Germ |
| Description | This locus represents a small inducible cytokine. The encoded protein, also known as macrophage inflammatory protein 1 alpha, plays a role in inflammatory responses through binding to the receptors CCR1, CCR4 and CCR5. Polymorphisms at this locus may be associated with both resistance and susceptibility to infection by human immunodeficiency virus type 1.[provided by RefSeq, Sep 2010] |
| Molecular Mass | 36.5 kDa |
| AA Sequence | MQVSTAALAVLLCTMALCNQFSASLAADTPTACCFSYTSRQIPQNFADYFETSSQC SKPGVIFLTKRSRQVCADPSEEWVQKYVSDLELSA |
| Applications | Enzyme-linked Immunoabsorbent Assay Western Blot (Recombinant protein) Antibody Production Protein Array |
| Storage | Store at -80 centigrade. Aliquot to avoid repeated freezing and thawing. |

 Tel: 1-631-559-9269 1-516-512-3133

 Email: info@creative-biomart.com  Fax: 1-631-938-8127

 45-1 Ramsey Road, Shirley, NY 11967, USA

Storage Buffer 50 mM Tris-HCl, 10 mM reduced Glutathione, pH=8.0 in the elution buffer.

GENE INFORMATION

Gene Name CCL3 chemokine (C-C motif) ligand 3 [Homo sapiens]

Official Symbol CCL3

Synonyms CCL3; chemokine (C-C motif) ligand 3; SCYA3, small inducible cytokine A3 (homologous to mouse Mip 1a); C-C motif chemokine 3; G0S19 1; LD78ALPHA; MIP 1 alpha; SIS-beta; PAT 464.1; G0/G1 switch regulatory protein 19-1; macrophage inflammatory protein 1-alpha; tonsillar lymphocyte LD78 alpha protein; small inducible cytokine A3 (homologous to mouse Mip-1a); MIP1A; SCYA3; G0S19-1; MIP-1-alpha;

Gene ID 6348

mRNA Refseq NM_002983

Protein Refseq NP_002974

MIM 182283

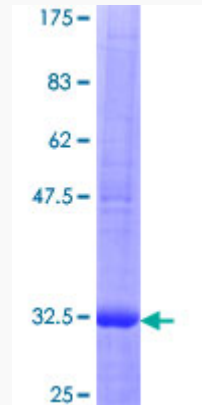
UniProt ID P10147

 Tel: 1-631-559-9269 1-516-512-3133

 Email: info@creative-biomart.com  Fax: 1-631-938-8127

 45-1 Ramsey Road, Shirley, NY 11967, USA

**Quality Control
Testing**



12.5% SDS-PAGE Stained with Coomassie Blue.

 Tel: 1-631-559-9269 1-516-512-3133

 Email: info@creative-biomart.com  Fax: 1-631-938-8127

 45-1 Ramsey Road, Shirley, NY 11967, USA