

## Active Recombinant Human CCL3 Protein (Ala27-Ala92), N-His tagged, Animal-free, Carrier-free

Cat. No. CCL3-268H Lot. No. (See product label)

### SPECIFICATION

<b>Product Overview</b>	Recombinant Human CCL3 Protein (Ala27-Ala92) with N-His tag was expressed in E. coli and Animal-free as well as Carrier-free.
<b>Species</b>	Human
<b>Source</b>	E.coli
<b>ProteinLength</b>	Ala27-Ala92
<b>Description</b>	C-C Motif Chemokine Ligand 3 (CCL3) is a 7.33Da cytokine with 66 amino acid residues. CCL3 is also called macrophage inflammatory protein 1-alpha (MIP-1-alpha) and is expressed in bone marrow and liver. Upon binding to the receptor, CCR1, CCR4, or CCR5, CCL3 plays an essential role in acute inflammatory responses like recruitment and activation of polymorphonuclear leukocytes and induction of monophasic fever. In addition, CCL3 participates in resistance to type 1 virus infection, mediation of MAPK signaling pathway, cell-cell signaling, and calcium-mediated signaling.
<b>Form</b>	Lyophilized
<b>Bio-activity</b>	Measure by its ability to chemoattract human PBMC using a concentration range of 5 -50 ng/mL.
<b>Molecular Mass</b>	The protein has a calculated MW of 8.4 kDa.

 Tel: 1-631-559-9269 1-516-512-3133

 Email: [info@creative-biomart.com](mailto:info@creative-biomart.com)  Fax: 1-631-938-8127

 45-1 Ramsey Road, Shirley, NY 11967, USA

	The protein migrates as 8-11 kDa under reducing condition (SDS-PAGE analysis).
<b>Endotoxin</b>	< 0.1 EU/μg of the protein by the LAL method.
<b>Purity</b>	>95% as determined by SDS-PAGE analysis.
<b>Storage</b>	This product is stable after storage at: -20 centigrade for 12 months in lyophilized state from date of receipt. -20 or -80 centigrade for 1 month under sterile conditions after reconstitution. Avoid repeated freeze/thaw cycles.
<b>Storage Buffer</b>	Lyophilized from a 0.2 μm filtered solution of PBS, pH 8.0.
<b>Reconstitution</b>	It is recommended to reconstitute the lyophilized protein in sterile H2O to a concentration not less than 200 μg/mL and incubate the stock solution for at least 20 min to ensure sufficient re-dissolved.
<b>Shipping</b>	The product is shipped with polar packs. Upon receipt, store it immediately at -20 centigrade or lower for long term storage.

## GENE INFORMATION

<b>Gene Name</b>	CCL3 chemokine (C-C motif) ligand 3 [ Homo sapiens (human) ]
<b>Official Symbol</b>	CCL3
<b>Synonyms</b>	CCL3; chemokine (C-C motif) ligand 3; SCYA3, small inducible cytokine A3 (homologous to mouse Mip 1a); C-C motif chemokine 3; G0S19 1; LD78ALPHA; MIP 1 alpha; SIS-beta; PAT 464.1; G0/G1 switch regulatory protein 19-1; macrophage inflammatory protein 1-alpha; tonsillar lymphocyte LD78 alpha protein; small inducible cytokine A3 (homologous to mouse Mip-1a); MIP1A; SCYA3; G0S19-1; MIP-1-alpha;

 Tel: 1-631-559-9269 1-516-512-3133

 Email: [info@creative-biomart.com](mailto:info@creative-biomart.com)  Fax: 1-631-938-8127

 45-1 Ramsey Road, Shirley, NY 11967, USA

**Gene ID** 6348

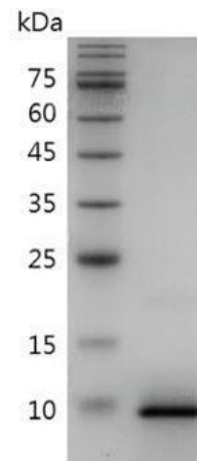
**mRNA Refseq** NM\_002983

**Protein Refseq** NP\_002974

**MIM** 182283

**UniProt ID** P10147

**SDS-PAGE analysis  
of recombinant  
human CCL3.**



 Tel: 1-631-559-9269 1-516-512-3133

 Email: [info@creative-biomart.com](mailto:info@creative-biomart.com)  Fax: 1-631-938-8127

 45-1 Ramsey Road, Shirley, NY 11967, USA